



**Annual Tuition and Fees Comparison
Among Three Different Groups:**

**Southern Universities Group
Board of Regents Peer Comparison Group
Southern Regional Education Board**

Mauricio Saavedra, Graduate Assistant

November, 2008

The study presented herein is a comparative analysis of the annual tuition and fees of the University of Georgia (UGA) within three different groups: Southern Universities Group (SUG), Board of Regents Peer Comparison Group (BOR), and Southern Regional Education Board (SREB). For the former group, the analysis includes the years 1993-94 to 2008-09. For the latter two groups, the analysis includes the years 1999-2000 to 2008-09 (9-year study). All three groups in this analysis include resident and nonresident annual tuition and fees for undergraduate students. Only SUG presents the analysis for graduate students. Out of the 31 SUG institutions, 29 had fifteen years of undergraduate and graduate data; hence, the analysis for SUG is based on those 29 institutions.

SUG comprises a data exchange group of 31 major research and land grant universities primarily in the states within the Southern Regional Education Board. BOR includes a comparison group of 16 universities defined by the Board of Regents of the University System of Georgia. SREB consists of a group of 16 universities, each from a different state within the southern region in the United States. Selected results are highlighted for each group, followed by full data tables and charts.

Southern Universities Group

Undergraduate

Residents

- The average 15-year increase in tuition and fees for residents was 183%. The University of Georgia's increase was 168%, 16th highest of 29.
- The largest increase occurred at the four institutions in Texas: University of Houston (434%), Texas A & M University (414%), University of Texas at Austin (405%), and Texas Tech University (338%).
- The lowest increases were at Louisiana State University (94%), Mississippi State University (108%), University of Southern Mississippi (113%), and Virginia Tech (115%).
- Over the past 5 years University of Texas at Austin has had the highest increase (104%), followed by University of Oklahoma (98%), University of Houston (93%), and University of Kentucky (70%).
- Over the past 5 years University of Maryland has had the lowest increase (18%), followed by Louisiana State University (30%), University of Southern Mississippi (32%), and University of Alabama – Birmingham (32%).

Non-Residents

- The average 15-year increase in tuition and fees for non-residents was 185%. The University of Georgia's increase was 276%, 3rd highest of the 29 SUG institutions included.
- The largest increases occurred at University of Texas at Austin (369%), Texas A & M University (296%), University of Georgia (276%), and Georgia Institute of Technology (274%).
- The lowest increases were at North Carolina State University (108%), University of Delaware (110%), Virginia Tech (115%), and Louisiana State University (133%).

- Over the past 5 years University of Texas at Austin has had the highest increase (140%), followed by Texas A & M University (83%), University of Oklahoma (70%), and Oklahoma State University (64%).
- Over the past 5 years North Carolina State University has had the lowest increase (11%), followed by Texas Tech University (29%), University of Delaware (32%), and University of Maryland (32%).

Graduate

Residents

- The average 15-year increase in tuition and fees for residents was 197%. The University of Georgia's increase was 196%, 13th highest of 29.
- The largest increases occurred at University of Houston (411%), Georgia State University (393%), University of North Carolina (363%), and Texas A & M University (358%).
- The lowest increases were at Louisiana State University (94%), Mississippi State University (108%), University of Southern Mississippi (113%), and University of Mississippi (118%).
- Over the past 5 years University of Oklahoma has had the highest increase (130%), followed by University of Houston (117%), Arizona State University (86%), and University of Texas at Austin (82%).
- Over the past 5 years Clemson University has had the lowest increase (7%), followed by University of Maryland (29%), Louisiana State University (31%), and University of Southern Mississippi (32%).

Non-Residents

- The average 15-year increase in tuition and fees for non-residents was 190%. The University of Georgia's increase was greater than this average, at 272%, 3rd highest of 29.
- The largest increases occurred at Georgia State University (452%), University of Oklahoma (275%), University of Georgia (272%), and Georgia Institute of Technology (270%).
- The lowest increases were at University of Virginia (81%), North Carolina State University (110%), University of Delaware (110%), and Louisiana State University (133%).
- Over the past 5 years University of Oklahoma has had the highest increase (98%), followed by University of Texas at Austin (67%), University of Houston (63%), and University of Alabama (59%).
- Over the past 5 years Clemson University has had the lowest increase (7%), followed by North Carolina State University (10%), University of Virginia (11%), and Florida State University (24%).

**Southern Universities Group
Comparison of Annual Tuition and Fees Charged to Undergraduate Students**

Institution	1993-94		1994-95		1995-96		1996-97		1997-98		1998-99	
	Resident	Non-Res	Resident	Non-Res	Resident	Non-Res	Resident	Non-Res	Resident	Non-Res	Resident	Non-Res
University of Alabama	2,172	5,424	2,260	5,642	2,374	5,924	2,470	6,268	2,594	6,808	2,684	7,216
UA - Birmingham	2,358	4,458	2,511	4,731	2,604	4,914	2,700	5,100	2,970	5,490	3,060	5,670
Auburn University	1,950	5,850	2,100	6,300	2,250	6,750	2,355	7,065	2,610	7,740	2,820	8,340
University of Arkansas	2,490	6,028	2,557	6,172	2,708	6,435	2,787	6,622	2,887	6,835	3,193	7,993
Arizona State University					1,950	7,978	2,007	8,377	2,059	8,711	2,159	9,111
University of Delaware	3,948	10,048	4,100	10,630	4,286	11,156	4,430	11,690	4,574	12,204	4,716	12,716
Florida State University	1,780	6,682	1,798	6,700	1,798	6,700	1,882	7,127	1,988	7,904	2,085	8,741
University of Florida					1,705	6,607	1,793	7,038	1,926	7,483	2,052	8,708
University of Georgia	2,250	5,940	2,352	6,150	2,540	6,827	2,694	7,875	2,838	8,790	2,930	9,860
Georgia Institute of Technology	2,277	6,732	2,343	6,933	2,457	7,638	2,686	8,946	2,901	9,621	2,991	9,921
Georgia State University	2,019	6,452	2,154	6,744	2,249	7,424	2,385	8,640	2,673	9,423	2,778	9,744
University of Kentucky	2,278	6,198	2,510	6,870	2,594	7,114	2,676	7,356	2,736	7,536	3,016	8,376
Louisiana State University	2,625	5,925	2,645	5,945	2,663	5,963	2,687	5,987	2,711	6,311	2,871	6,771
University of Maryland	3,179	8,783	3,480	9,284	3,794	9,738	4,169	10,228	4,460	10,589	4,699	11,221
University of Mississippi	2,456	4,916	2,546	5,006	2,546	5,366	2,631	5,451	2,731	5,551	3,053	6,155
Mississippi State University	2,473	4,933	2,561	5,021	2,591	5,411	2,631	5,451	2,731	5,551	3,017	6,119
University of Southern Mississippi	2,392	4,852	2,428	4,888	2,468	5,288	2,518	5,338	2,591	5,411	2,870	5,972
University of North Carolina	1,454	8,496	1,569	9,095	1,686	9,802	2,161	10,693	2,224	11,210	2,263	11,429
North Carolina State University	1,421	8,463	1,584	9,110	1,732	9,848	2,200	10,732	2,270	11,256	2,364	11,530
University of Oklahoma	1,901	5,348	1,918	5,365	2,024	5,714	2,178	5,868	2,309	6,321	2,313	6,333
Oklahoma State University	1,882	5,328	1,892	5,339	2,148	5,838	2,161	5,851	2,356	6,376	2,356	6,376
Clemson University	2,954	7,896	3,036	8,116	3,112	8,316	3,112	8,316	3,252	8,676	3,344	9,100
University of South Carolina	3,090	7,808	3,196	8,074	3,280	8,324	3,362	8,574	3,434	8,840	3,530	9,242
University of Tennessee	1,982	5,762	2,052	5,986	2,164	6,294	2,220	6,556	2,576	7,258	2,744	7,800
University of Houston	1,530	5,610	1,602	5,892	1,666	7,426	2,135	8,555	2,329	8,749	2,489	8,879
University of Texas at Austin	1,691	5,771	1,815	6,105	2,208	7,968	2,612	9,032	2,866	9,286	3,004	9,394
Texas A & M University	1,526	5,606	1,591	5,881	2,191	7,951	2,361	8,781	2,805	9,225	2,899	9,289
Texas Tech University	1,550	5,630	1,807	6,097	2,030	7,790	2,446	8,866	2,607	9,027	2,801	9,191
University of Virginia	4,350	12,254	4,480	13,052	4,614	14,006	4,648	14,434	4,786	15,030	4,866	15,814
Virginia Tech	3,812	9,680	3,951	10,404	4,087	10,739	4,131	10,783	4,147	11,111	4,305	11,521
West Virginia University	2,026	5,870	2,128	6,370	2,192	6,784	2,262	7,124	2,336	7,356	2,662	7,846
SUG Average	\$2,338	\$6,646	\$2,447	\$6,962	\$2,539	\$7,549	\$2,693	\$8,023	\$2,848	\$8,441	\$2,998	\$8,915

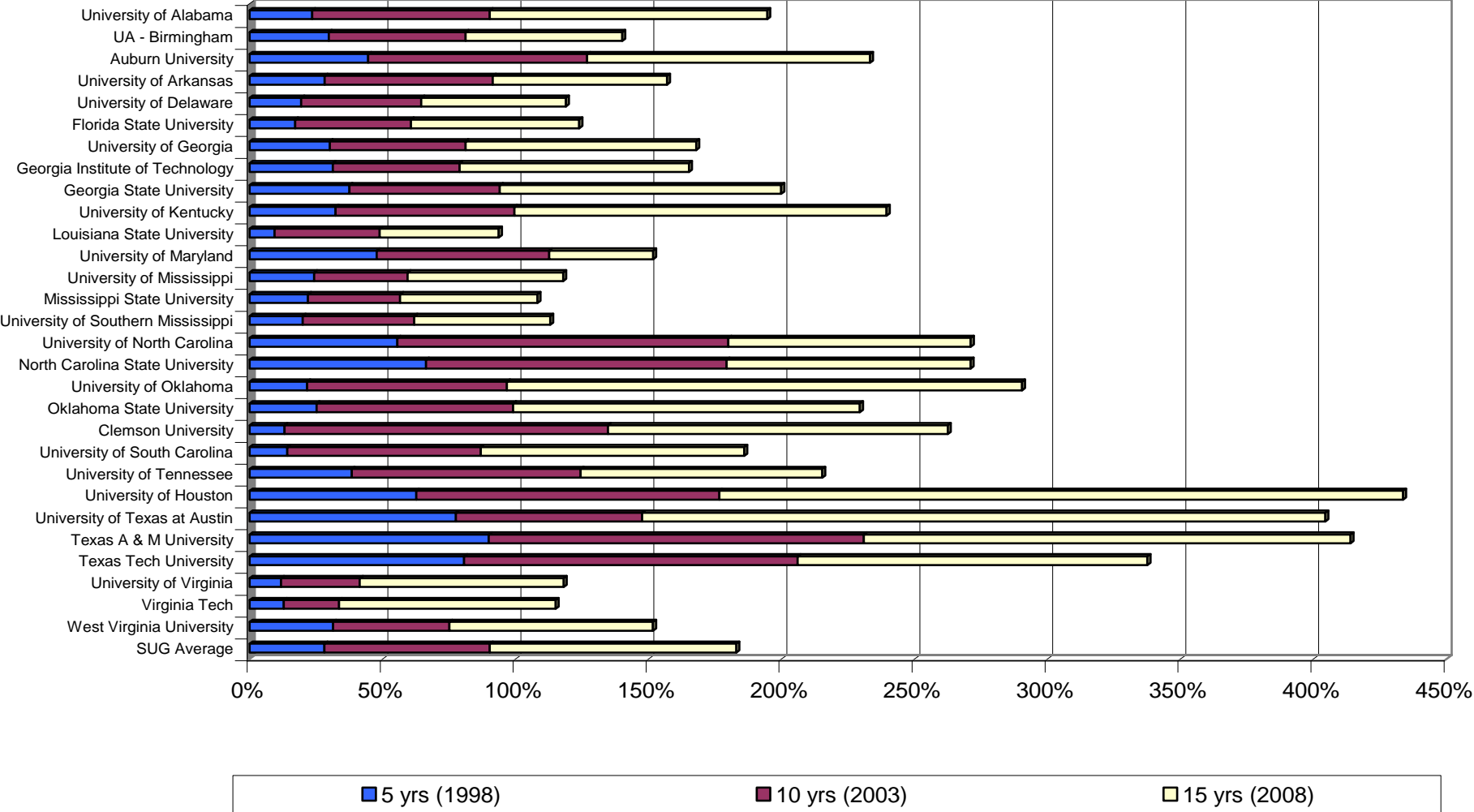
Tuition and Fees Comparison - 4 -

Institution	1999-2000		2000-01		2001-02		2002-03		2003-04		2004-05	
	Resident	Non-Res	Resident	Non-Res	Resident	Non-Res	Resident	Non-Res	Resident	Non-Res	Resident	Non-Res
University of Alabama	2,872	7,722	3,014	8,162	3,292	8,912	3,556	9,624	4,134	11,294	4,630	12,664
UA - Birmingham	3,240	5,970	3,363	6,183	3,640	6,610	3,880	7,810	4,274	9,494	4,662	10,422
Auburn University	2,976	8,766	3,154	9,254	3,380	9,900	3,784	11,084	4,426	12,886	4,828	14,048
University of Arkansas	3,467	8,807	3,828	9,498	4,158	10,113	4,456	10,828	4,768	11,518	5,135	12,425
Arizona State University	2,261	9,413	2,346	9,802	2,488	10,354	2,585	11,105	3,595	12,115	4,064	12,919
University of Delaware	4,858	13,228	5,004	13,754	5,290	14,380	5,760	15,290	6,498	16,028	6,954	16,640
Florida State University	2,196	9,184	2,378	9,716	2,513	10,401	2,684	12,228	2,860	13,888	3,038	15,444
University of Florida	2,141	9,130	2,256	9,594	2,444	10,332	2,581	12,046	2,780	13,808	2,955	15,827
University of Georgia	3,034	10,276	3,276	10,794	3,418	11,314	3,616	12,986	4,078	14,854	4,272	15,588
Georgia Institute of Technology	3,108	10,350	3,308	10,826	3,454	12,350	3,616	13,986	4,076	16,002	4,278	17,558
Georgia State University	2,886	10,222	3,132	10,650	3,292	11,188	3,472	11,842	3,920	13,544	4,154	14,260
University of Kentucky	3,296	9,216	3,446	9,666	3,735	10,275	3,975	10,497	4,547	11,227	5,165	11,945
Louisiana State University	2,881	7,081	3,395	8,695	3,420	8,720	3,536	8,836	3,910	9,210	4,226	11,026
University of Maryland	4,939	11,827	5,136	12,668	5,341	13,413	5,670	14,434	6,759	17,433	7,410	18,710
University of Mississippi	3,053	6,155	3,153	7,106	3,626	8,172	3,916	8,826	3,916	8,826	4,110	9,264
Mississippi State University	3,017	6,119	3,117	7,065	3,586	8,125	3,874	8,780	3,874	8,780	4,106	9,307
University of Southern Mississippi	2,870	5,972	2,970	6,898	3,416	7,932	3,758	8,725	3,874	8,752	4,106	9,276
University of North Carolina	2,365	11,531	2,768	11,934	3,219	12,393	3,856	15,140	4,072	15,920	4,451	17,549
North Carolina State University	2,414	11,580	2,814	11,980	3,228	13,294	3,827	15,111	3,970	15,818	4,282	16,180
University of Oklahoma	2,456	6,791	2,581	6,916	2,713	7,437	2,929	8,077	3,741	10,254	4,140	11,658
Oklahoma State University	2,518	6,853	2,647	6,982	2,794	7,519	3,025	8,079	3,748	10,066	4,071	11,361
Clemson University	3,470	9,456	3,590	9,784	5,090	11,284	5,834	12,892	6,934	14,532	7,840	16,404
University of South Carolina	3,640	9,714	3,868	10,154	4,064	11,004	4,984	13,104	5,778	15,116	6,416	16,784
University of Tennessee	3,104	9,172	3,362	10,166	3,784	11,570	4,056	12,408	4,450	13,532	4,748	14,528
University of Houston	2,830	9,310	2,998	9,448	3,168	9,498	3,348	9,888	4,233	11,313	4,973	12,713
University of Texas at Austin	3,128	9,608	3,575	10,025	3,766	10,096	3,950	10,490	4,188	11,268	6,588	14,772
Texas A & M University	3,167	9,647	3,374	9,824	3,722	10,052	4,748	11,288	5,051	12,131	5,955	13,695
Texas Tech University	2,937	9,417	3,274	9,724	3,488	9,819	3,867	10,407	4,745	11,825	5,848	13,588
University of Virginia	4,305	16,778	4,335	17,584	4,421	18,453	5,165	20,375	6,154	22,174	6,790	22,890
Virginia Tech	3,620	11,844	3,640	12,128	3,664	12,488	4,736	14,352	5,095	15,029	5,838	16,581
West Virginia University	2,748	8,100	2,836	8,362	2,948	8,832	3,240	9,710	3,548	10,768	3,938	12,060
SUG Average	\$3,090	\$9,330	\$3,288	\$9,850	\$3,567	\$10,524	\$3,945	\$11,621	\$4,451	\$12,884	\$4,967	\$14,132

Tuition and Fees Comparison - 5 -

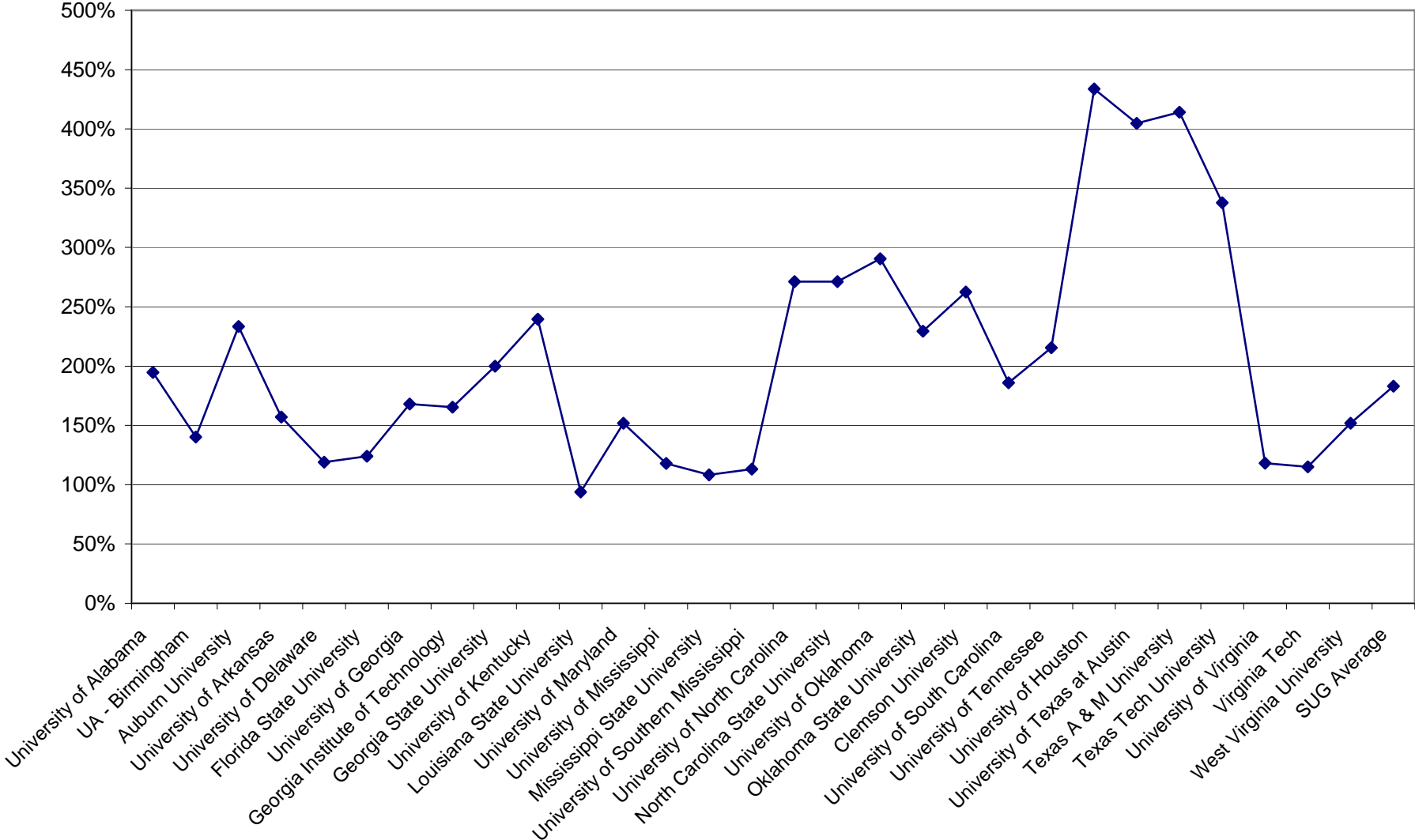
Institution	2005-06		2006-2007		2007 - 2008		2008 - 2009		15-yr %increase	
	Resident	Non-Res	Resident	Non-Res	Resident	Non-Res	Resident	Non-Res	Resident	Non-Res
University of Alabama	4,864	13,516	5,278	15,294	5,700	16,518	6,400	18,000	195%	232%
UA - Birmingham	4,792	10,732	4,792	10,732	5,186	11,546	5,663	12,770	140%	186%
Auburn University	5,278	14,878	5,496	15,496	5,834	16,334	6,500	18,260	233%	212%
University of Arkansas	5,495	13,222	5,808	13,942	6,038	14,492	6,399	15,276	157%	153%
Arizona State University	4,406	15,095	4,688	15,847	4,971	17,003	5,659	17,947		
University of Delaware	7,318	17,474	7,740	18,450	8,150	19,400	8,646	21,126	119%	110%
Florida State University	3,208	16,340	3,307	16,439	3,355	16,487	3,987	18,432	124%	176%
University of Florida	3,094	17,222	3,206	17,791	3,257	17,841	3,777	20,622		
University of Georgia	4,628	16,848	4,964	18,040	5,622	20,726	6,030	22,342	168%	276%
Georgia Institute of Technology	4,648	18,990	4,926	20,272	5,642	23,366	6,040	25,182	165%	274%
Georgia State University	4,464	15,378	4,746	16,206	5,076	17,338	6,056	20,624	200%	220%
University of Kentucky	5,812	12,798	6,510	13,970	7,096	14,896	7,736	15,884	240%	156%
Louisiana State University	4,419	12,719	4,449	12,749	4,543	12,843	5,086	13,800	94%	133%
University of Maryland	7,807	20,143	7,906	21,345	7,969	22,208	8,005	23,076	152%	163%
University of Mississippi	4,320	9,744	4,602	10,566	4,932	11,436	5,352	12,504	118%	154%
Mississippi State University	4,312	9,772	4,596	10,552	4,978	11,469	5,151	12,503	108%	153%
University of Southern Mississippi	4,312	9,742	4,594	10,622	4,914	11,692	5,096	12,746	113%	163%
University of North Carolina	4,613	18,411	5,033	19,681	5,340	20,988	5,397	22,295	271%	162%
North Carolina State University	4,338	16,536	4,783	16,981	5,117	17,315	5,274	17,572	271%	108%
University of Oklahoma	4,408	12,301	5,110	13,399	5,607	14,721	7,423	17,404	290%	225%
Oklahoma State University	4,365	12,389	4,997	13,569	5,491	14,916	6,201	16,556	229%	211%
Clemson University	8,816	18,440	9,400	19,824	9,937	21,867	10,709	23,731	263%	201%
University of South Carolina	7,314	18,956	7,808	20,236	8,346	21,632	8,838	22,908	186%	193%
University of Tennessee	5,290	16,360	5,622	17,188	5,932	18,174	6,250	19,208	215%	233%
University of Houston	5,163	13,443	6,949	15,199	7,450	15,790	8,167	16,597	434%	196%
University of Texas at Austin	6,972	16,310	7,630	20,364	7,670	24,544	8,532	27,047	405%	369%
Texas A & M University	6,399	14,679	6,966	15,216	7,335	15,675	7,844	22,184	414%	296%
Texas Tech University	6,152	14,432	6,459	14,709	6,783	15,123	6,783	15,213	338%	170%
University of Virginia	7,370	24,290	8,035	26,135	8,690	27,940	9,490	29,790	118%	143%
Virginia Tech	6,378	17,837	6,973	19,049	7,397	19,775	8,198	20,825	115%	115%
West Virginia University	4,164	12,874	4,476	13,840	4,722	14,600	5,100	15,770	152%	169%
SUG Average	\$5,320	\$15,222	\$5,737	\$16,248	\$6,099	\$17,376	\$6,638	\$18,974	183%	185%

Southern Universities Group
Undergraduate Resident Tuition and Fees
Cumulative Percentage Increase from 1993-94 to 2008-09

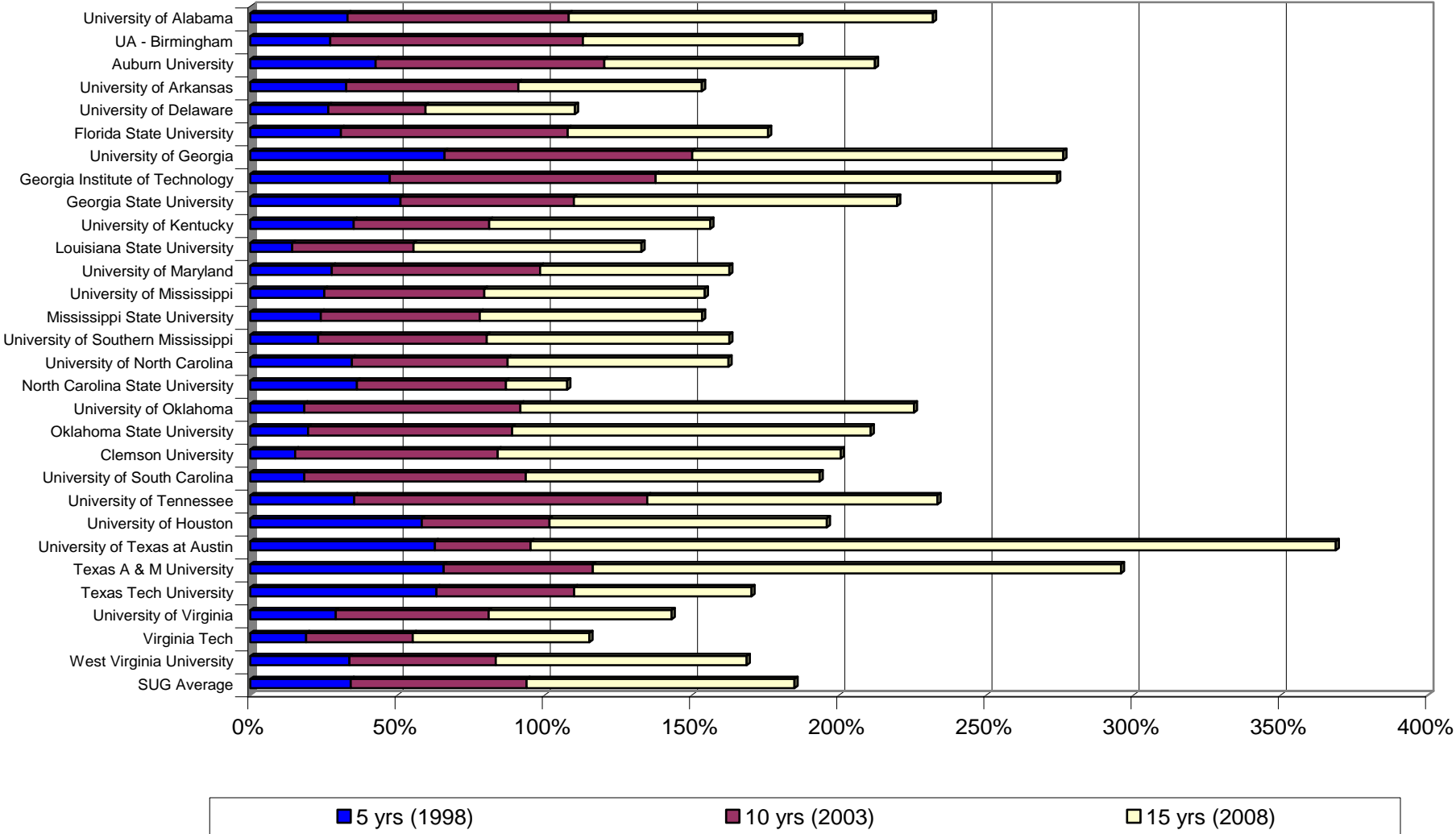


Southern Universities Group

Undergraduate Resident Tuition and Fees
Percentage Increase 1993-94 to 2000-09

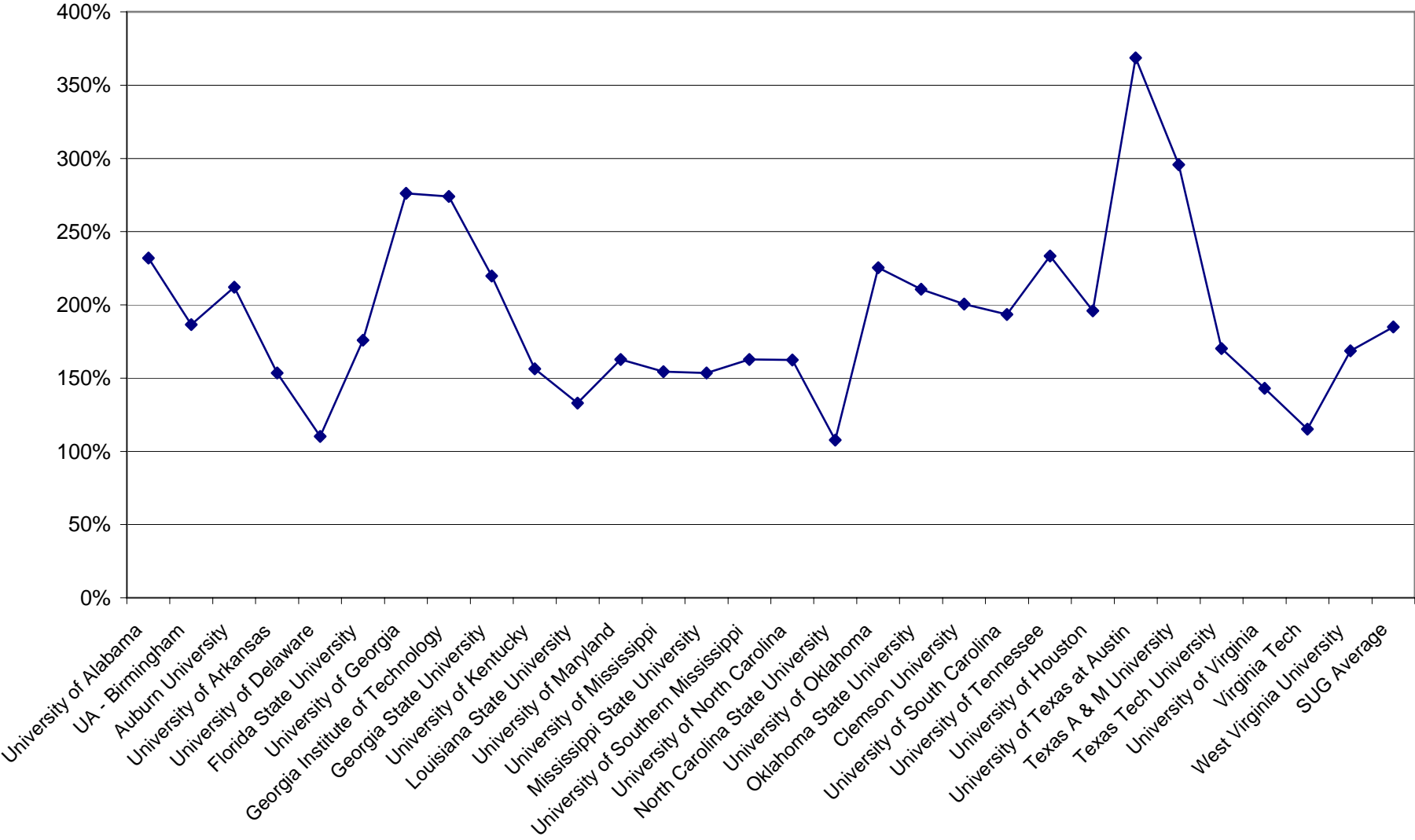


Southern Universities Group
Undergraduate Nonresident Tuition and Fees
Cumulative Percentage Increase from 1993-94 to 2008-09



Southern Universities Group

Undergraduate Nonresident Tuition and Fees
Percentage Increase 1993-94 to 2008-09



**Southern Universities Group
Comparison of Annual Tuition and Fees Charged to Graduate Students**

Institution	1993-94		1994-95		1995-96		1996-97		1997-98		1998-99	
	Resident	Non-Res	Resident	Non-Res	Resident	Non-Res	Resident	Non-Res	Resident	Non-Res	Resident	Non-Res
University of Alabama	2,172	5,424	2,260	5,642	2,374	5,924	2,470	6,268	2,594	6,808	2,684	7,216
UA - Birmingham	2,100	3,972	2,247	4,239	2,346	4,434	2,448	4,632	2,688	4,992	2,760	5,136
Auburn University	1,950	5,850	2,100	6,300	2,250	6,750	2,355	7,065	2,610	7,740	2,820	8,340
Arizona State University					1,950	7,978	2,009	8,377	2,059	8,711	2,159	9,111
University of Arkansas	2,564	5,511	2,671	5,745	2,823	6,029	2,922	6,224	3,016	6,419	3,242	7,238
University of Delaware	3,854	9,954	4,006	10,536	4,192	11,062	4,336	11,596	4,490	12,120	4,626	12,626
Florida State University	2,670	8,742	2,685	8,757	2,685	8,757	2,839	9,337	3,145	10,475	3,332	11,578
University of Florida					2,610	8,682	2,768	9,266	3,096	10,426	3,306	11,551
University of Georgia	2,250	5,940	2,352	6,150	2,540	6,827	2,799	8,238	3,069	9,630	3,290	11,300
Georgia Institute of Technology	2,277	6,732	2,343	6,933	2,457	7,638	2,686	8,946	3,132	10,548	3,351	11,361
Georgia State University	1,404	4,359	1,448	4,553	1,448	4,553	1,598	5,540	1,908	6,363	3,129	11,148
University of Kentucky	2,478	6,798	2,730	7,530	2,814	7,774	2,916	8,076	2,976	8,256	3,276	9,156
Louisiana State University	2,628	5,928	2,648	5,948	2,672	5,972	2,696	5,996	2,720	6,320	2,820	6,720
University of Maryland	4,966	8,206	5,407	9,127	5,973	9,413	6,453	9,453	7,015	10,087	7,092	10,164
University of Mississippi	2,456	4,916	2,546	5,006	2,546	5,366	2,631	5,451	2,731	5,551	3,053	6,155
Mississippi State University	2,473	4,933	2,561	5,021	2,591	5,411	2,631	5,451	2,731	5,551	3,017	6,119
University of Southern Mississippi	2,392	4,852	2,428	4,888	2,468	5,288	2,518	5,338	2,591	5,411	2,870	5,972
University of North Carolina	1,446	8,488	1,560	9,086	1,677	9,793	2,151	10,683	2,215	11,201	2,253	11,419
North Carolina State University	1,427	8,469	1,590	9,116	1,738	9,854	2,206	10,738	2,276	11,262	2,370	11,536
University of Oklahoma	1,977	5,561	1,994	5,577	2,106	5,946	2,232	6,072	2,383	6,562	2,388	6,576
Oklahoma State University	1,972	5,555	1,980	5,564	2,212	6,052	2,224	6,064	2,408	6,596	2,408	6,596
Clemson University	2,954	5,718	3,036	5,882	3,112	6,034	3,112	6,034	3,252	6,334	3,344	6,642
University of South Carolina	3,230	6,524	3,340	6,746	3,508	7,084	3,630	7,368	3,724	7,634	3,894	8,114
University of Tennessee	2,412	6,192	2,500	6,434	2,626	6,756	2,744	7,080	3,142	7,824	3,354	8,410
University of Houston	1,926	4,566	2,034	4,794	2,038	6,022	2,365	6,925	2,569	7,081	2,729	7,169
University of Texas at Austin	2,051	5,171	2,211	5,691	2,566	7,174	2,940	8,076	3,194	8,330	3,356	8,468
Texas A & M University	1,681	5,329	1,813	5,461	2,557	7,165	2,745	7,881	3,153	8,289	3,223	8,335
Texas Tech University	1,586	4,898	1,803	5,235	2,126	6,734	2,536	7,672	2,667	7,803	2,825	7,937
University of Virginia	4,350	12,254	4,480	13,052	4,614	14,006	4,648	14,434	4,786	15,030	4,866	15,814
Virginia Tech	4,400	6,254	4,557	6,726	4,709	6,941	4,753	6,985	4,769	7,199	4,927	7,537
West Virginia University	2,136	6,156	2,244	6,682	2,336	7,014	2,412	7,366	2,490	7,606	2,820	8,104
SUG Average	\$2,489	\$6,319	\$2,606	\$6,635	\$2,731	\$7,240	\$2,896	\$7,698	\$3,084	\$8,199	\$3,277	\$8,824

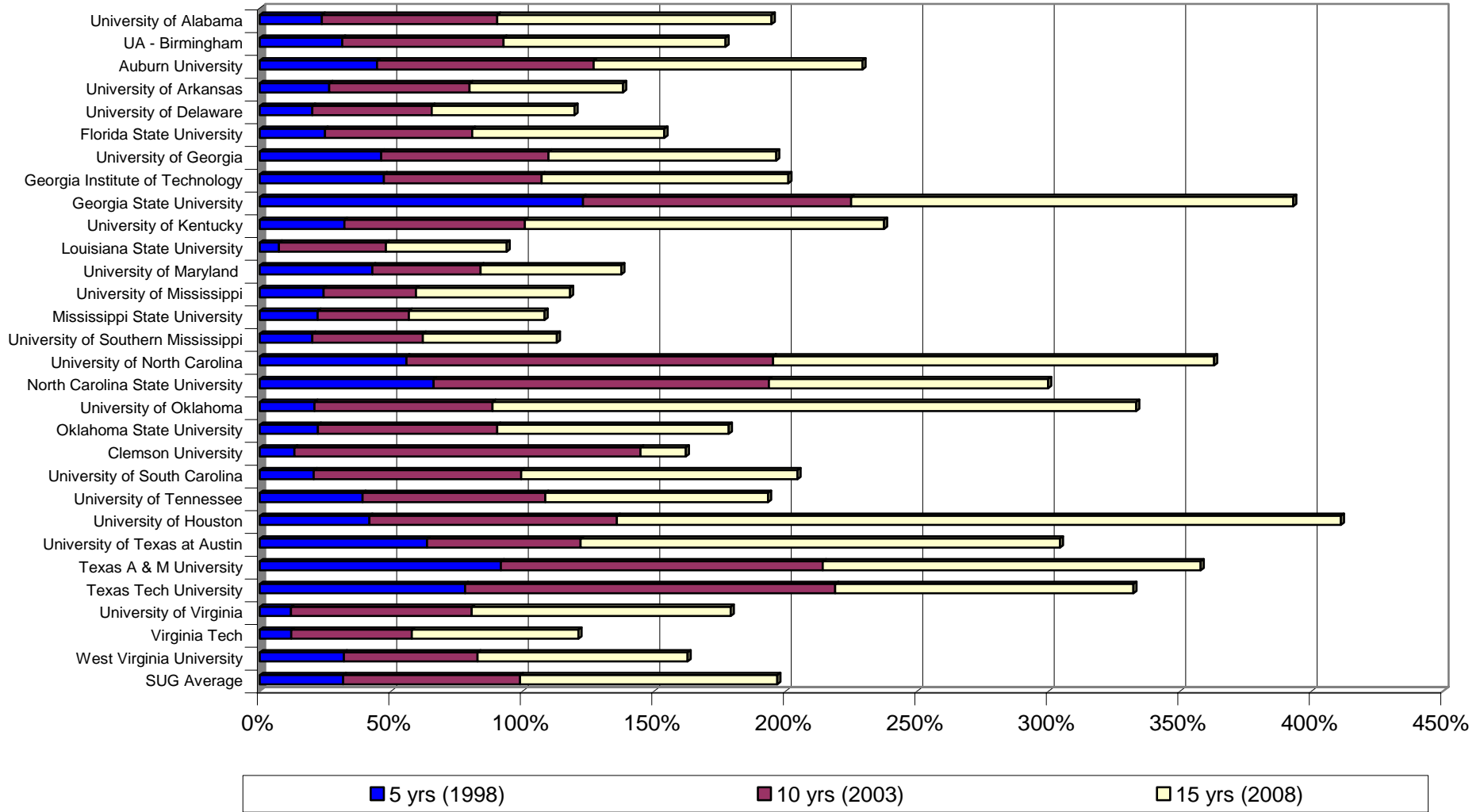
Tuition and Fees Comparison - 11 -

Institution	1999-2000		2000-01		2001-02		2002-03		2003-04		2004-05	
	Resident	Non-Res	Resident	Non-Res	Resident	Non-Res	Resident	Non-Res	Resident	Non-Res	Resident	Non-Res
University of Alabama	2,872	7,722	3,014	8,162	3,292	8,912	3,556	9,624	4,134	11,294	4,630	12,664
UA - Birmingham	2,928	5,424	3,027	5,595	3,250	5,938	3,562	7,258	4,046	9,134	4,602	10,434
Auburn University	2,976	8,766	3,154	9,254	3,380	9,900	3,784	11,084	4,426	12,886	4,828	14,048
Arizona State University	2,261	9,413	2,346	9,802	2,488	10,354	2,585	11,105	3,795	12,315	5,129	13,649
University of Arkansas	3,522	7,896	3,834	8,460	4,055	8,914	4,333	9,532	4,609	10,117	4,963	10,912
University of Delaware	4,762	13,132	4,902	13,652	5,184	14,274	5,520	15,050	6,374	15,904	6,826	16,512
Florida State University	3,504	12,162	3,738	12,828	3,983	13,756	4,396	16,220	4,828	17,657	5,368	19,800
University of Florida	3,461	12,118	3,640	12,730	3,928	13,700	4,304	16,030	4,926	18,589	5,484	21,359
University of Georgia	3,516	12,204	3,776	12,794	3,942	13,410	4,174	15,218	4,720	17,420	4,948	18,282
Georgia Institute of Technology	3,590	12,278	3,808	12,826	3,978	13,446	4,174	14,218	4,718	16,269	4,954	17,850
Georgia State University	3,368	12,150	3,632	12,650	3,816	13,284	4,030	14,074	4,562	16,112	4,830	16,956
University of Kentucky	3,596	10,116	3,766	10,626	4,075	11,295	4,347	11,565	4,975	12,315	5,653	13,093
Louisiana State University	2,830	7,030	3,344	8,644	3,399	8,699	3,515	8,815	3,889	9,189	4,205	11,005
University of Maryland	7,160	10,592	7,359	11,007	7,650	11,466	8,054	12,302	9,135	15,207	9,781	17,701
University of Mississippi	3,053	6,155	3,153	7,106	3,626	8,172	3,916	8,826	3,916	8,826	4,110	9,264
Mississippi State University	3,017	6,119	3,117	7,065	3,586	8,125	3,874	8,780	3,874	8,780	4,106	9,307
University of Southern Mississippi	2,870	5,972	2,970	6,898	3,416	7,932	3,758	8,725	3,874	8,752	4,106	9,276
University of North Carolina	2,405	11,571	2,865	12,031	3,351	12,517	4,043	15,692	4,269	16,267	4,651	17,899
North Carolina State University	2,470	11,636	2,931	12,097	3,496	13,807	4,036	15,685	4,189	16,187	4,501	16,549
University of Oklahoma	2,532	7,056	2,624	7,148	2,768	7,699	2,981	8,355	3,727	10,524	4,022	11,431
Oklahoma State University	2,588	7,112	2,694	7,218	2,850	7,781	3,087	8,362	3,752	10,346	3,965	11,525
Clemson University	3,680	9,456	3,810	9,784	5,310	11,284	6,084	12,932	7,232	14,532	7,840	16,404
University of South Carolina	4,014	8,528	4,314	9,182	4,532	9,954	5,560	11,848	6,440	13,671	7,150	15,180
University of Tennessee	3,806	9,874	4,004	10,596	4,280	12,066	4,590	12,942	5,032	14,114	5,376	15,156
University of Houston	3,154	8,002	3,436	8,596	3,624	8,688	3,816	9,048	4,542	10,206	5,174	11,366
University of Texas at Austin	3,504	8,688	3,915	9,075	4,097	9,161	4,295	9,527	4,554	10,218	6,085	13,237
Texas A & M University	3,551	8,735	3,769	8,929	4,119	9,183	4,989	10,221	5,281	10,945	6,058	12,250
Texas Tech University	2,985	8,169	3,292	8,452	3,471	8,535	3,843	9,075	5,057	10,721	5,992	12,184
University of Virginia	4,916	16,603	5,023	17,409	5,178	18,268	6,046	19,136	7,856	19,964	9,200	20,200
Virginia Tech	4,950	7,758	5,069	7,949	5,219	8,189	6,431	9,666	6,944	10,663	7,512	11,682
West Virginia University	2,910	8,368	3,004	8,640	3,242	9,110	3,564	10,016	3,904	11,108	4,332	12,442
SUG Average	\$3,444	\$9,381	\$3,656	\$9,910	\$3,954	\$10,575	\$4,363	\$11,643	\$4,954	\$12,911	\$5,496	\$14,181

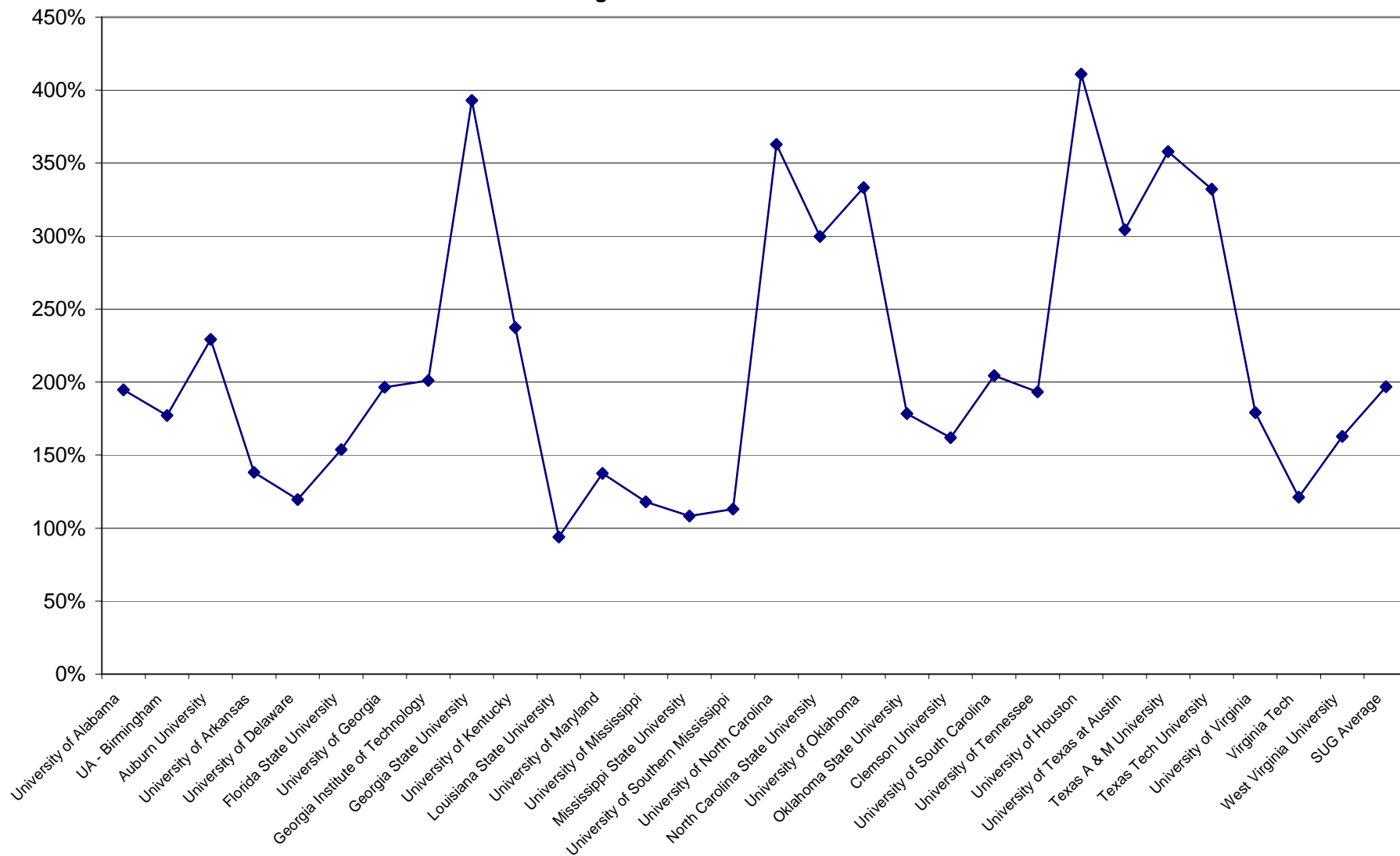
Tuition and Fees Comparison - 12 -

Institution	2005-06		2006-07		2007-08		2008-09		15-yr %increase	
	Resident	Non-Res	Resident	Non-Res	Resident	Non-Res	Resident	Non-Res	Resident	Non-Res
University of Alabama	4,864	13,516	5,278	15,294	5,700	16,518	6400	18000	195%	232%
UA - Birmingham	4,804	10,924	4,804	10,924	5,192	11,744	5819	13160	177%	231%
Auburn University	5,198	14,798	5,416	15,416	5,754	16,254	6420	18180	229%	211%
Arizona State University	5,561	14,743	6,027	16,613	6,377	18,070	7052	19606		
University of Arkansas	5,257	11,562	5,549	12,186	5,781	12,680	6106	13350	138%	142%
University of Delaware	7,318	17,474	7,596	18,306	7,936	19,186	8466	20946	120%	110%
Florida State University	5,651	20,804	5,822	20,976	6,112	21,226	6778	21932	154%	151%
University of Florida	6,234	21,359	6,827	21,951	7,478	22,603	7850	23730		
University of Georgia	5,358	19,758	5,658	20,778	6,170	21,424	6670	22078	196%	272%
Georgia Institute of Technology	5,378	19,306	5,620	20,244	6,444	23,334	6854	24926	201%	270%
Georgia State University	5,197	18,290	5,512	19,264	6,286	22,170	6922	24078	393%	452%
University of Kentucky	6,318	13,968	7,036	15,154	7,670	16,158	8360	17228	237%	153%
Louisiana State University	4,398	12,698	4,428	12,728	4,522	12,822	5095	13809	94%	133%
University of Maryland	10,349	20,597	10,864	22,264	11,328	23,184	11792	24128	137%	194%
University of Mississippi	4,320	9,738	4,602	10,566	4,932	11,440	5355	12510	118%	154%
Mississippi State University	4,312	9,772	4,596	10,552	4,978	11,469	5151	12503	108%	153%
University of Southern Mississippi	4,312	9,742	4,594	10,622	4,914	11,692	5096	12746	113%	163%
University of North Carolina	5,014	19,012	5,680	19,678	6,236	20,234	6693	21091	363%	148%
North Carolina State University	4,857	16,905	5,302	17,350	5,636	17,684	5705	17753	300%	110%
University of Oklahoma	4,260	12,039	4,909	13,077	5,377	14,357	8566	20857	333%	275%
Oklahoma State University	4,253	12,569	4,543	13,423	4,993	14,755	5489	16220	178%	192%
Clemson University	9,216	18,440	9,286	18,510	7,282	14,570	7738	15512	162%	171%
University of South Carolina	8,138	17,876	8,688	18,316	9,288	19,580	9836	20736	205%	218%
University of Tennessee	6,000	17,070	6,366	17,932	6,720	18,962	7074	20032	193%	224%
University of Houston	5,376	12,000	7,883	14,483	8,992	15,664	9844	16588	411%	263%
University of Texas at Austin	6,381	14,271	7,013	15,137	5,949	12,607	8292	17090	304%	230%
Texas A & M University	6,462	13,086	6,969	13,569	7,256	13,928	7696	14464	358%	171%
Texas Tech University	6,288	12,912	6,576	13,176	6,842	13,514	6854	13598	332%	178%
University of Virginia	9,800	20,400	10,550	20,550	11,240	21,240	12140	22140	179%	81%
Virginia Tech	7,977	12,835	8,540	14,057	8,986	15,351	9735	16866	121%	170%
West Virginia University	4,582	13,282	4,926	14,278	5,196	15,064	5612	16270	163%	164%
SUG Average	\$5,917	\$15,218	\$6,370	\$16,044	\$6,696	\$16,758	\$7,337	\$18,133	197%	190%

Southern Universities Group
Graduate Resident Tuition and Fees
Cummulative Percentage Increase from 1993-04 to 2008-09

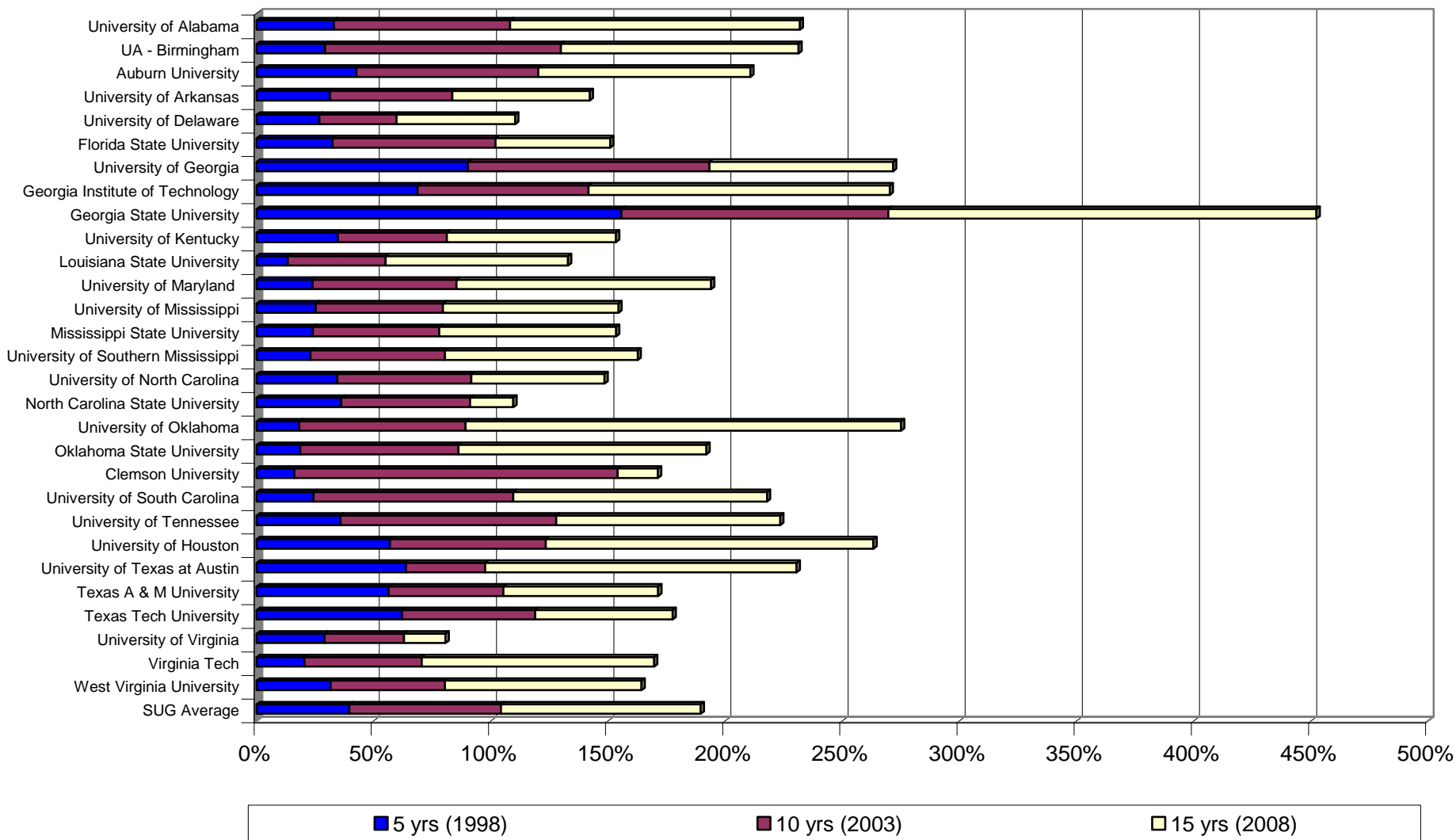


Southern Universities Group
Graduate Resident Tuition and Fees
Percentage Increase 1993-94 to 2008-09



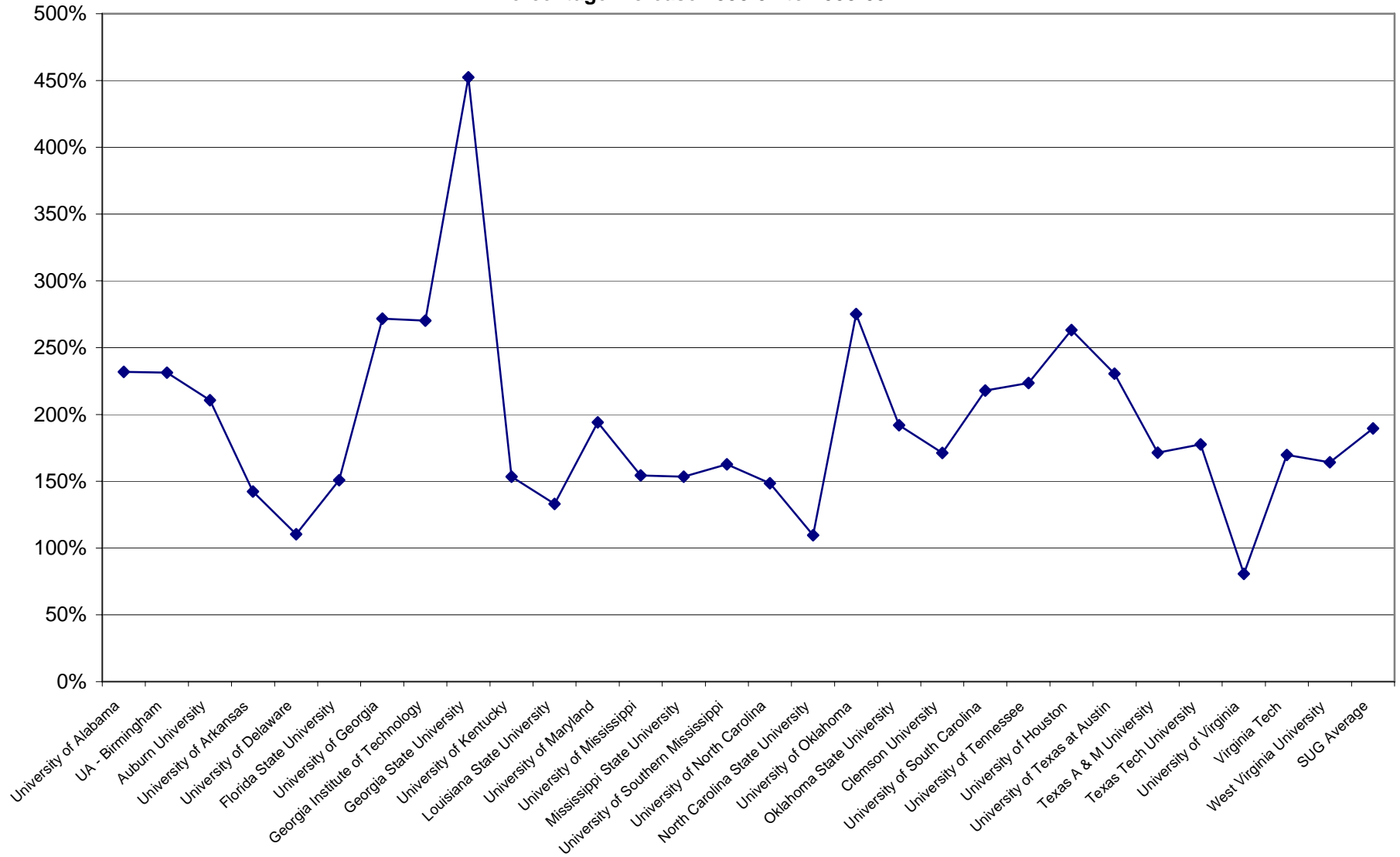
Southern Universities Group

Graduate Nonresident Tuition and Fees
Cumulative Percentage Increase from 1993-94 to 2008-09



Southern Universities Group

Graduate Resident Tuition and Fees
Percentage Increase 1993-94 to 2008-09



Board of Regents Peer Comparison Group

Undergraduate

Residents

- The average 9-year increase in tuition and fees for residents was 109%. The University of Georgia's increase was 99%, 11th highest of 16.
- The largest increases occurred at University of Kansas (191%), Texas A&M (148%), and Arizona State University (143%).
- The lowest increases were at University of Maryland College Park (62%), University of Oregon (73%), and Michigan State University (84%).
- Over the past 5 years University of Colorado has had the highest increase (81%), followed by University of Kansas (79%) and Virginia Polytechnic University (61%).
- Over the past 5 years University of Maryland has had the lowest increase (18%), followed by Indiana University (26%) and Iowa State University (26%).

Non-Residents

- The average 9-year increase in tuition and fees for non-residents was 88%. The University of Georgia's increase was 117%, 3rd highest of the 16.
- The largest increases occurred at Texas A&M (130%), University of Nebraska (122%), and University of Georgia (117%).
- The lowest increases were at North Carolina State University (52%), University of Oregon (53%), and University of Missouri (56%).
- Over the past 5 years Texas A&M has had the highest increase (83%), followed by University of Kansas (55%) and Michigan State University (52%).
- Over the past 5 years North Carolina State University has had the lowest increase (11%), followed by Iowa State University (21%) and University of Missouri (22%).

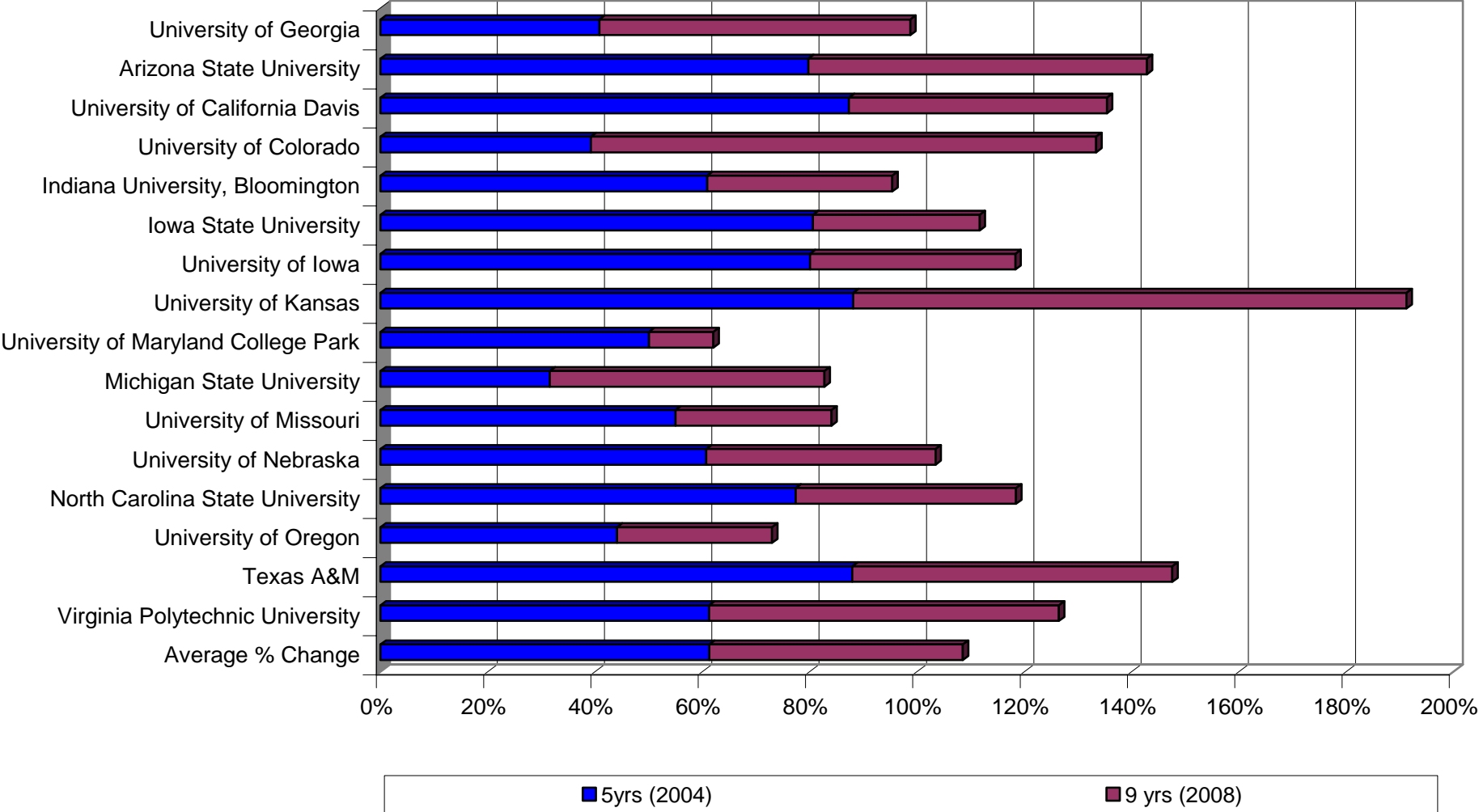
Note: 2008-2009 figures are preliminary.

Board of Regents Peer Comparison Group

Comparison of Annual Tuition and Fees Charged to Undergraduate Resident Students

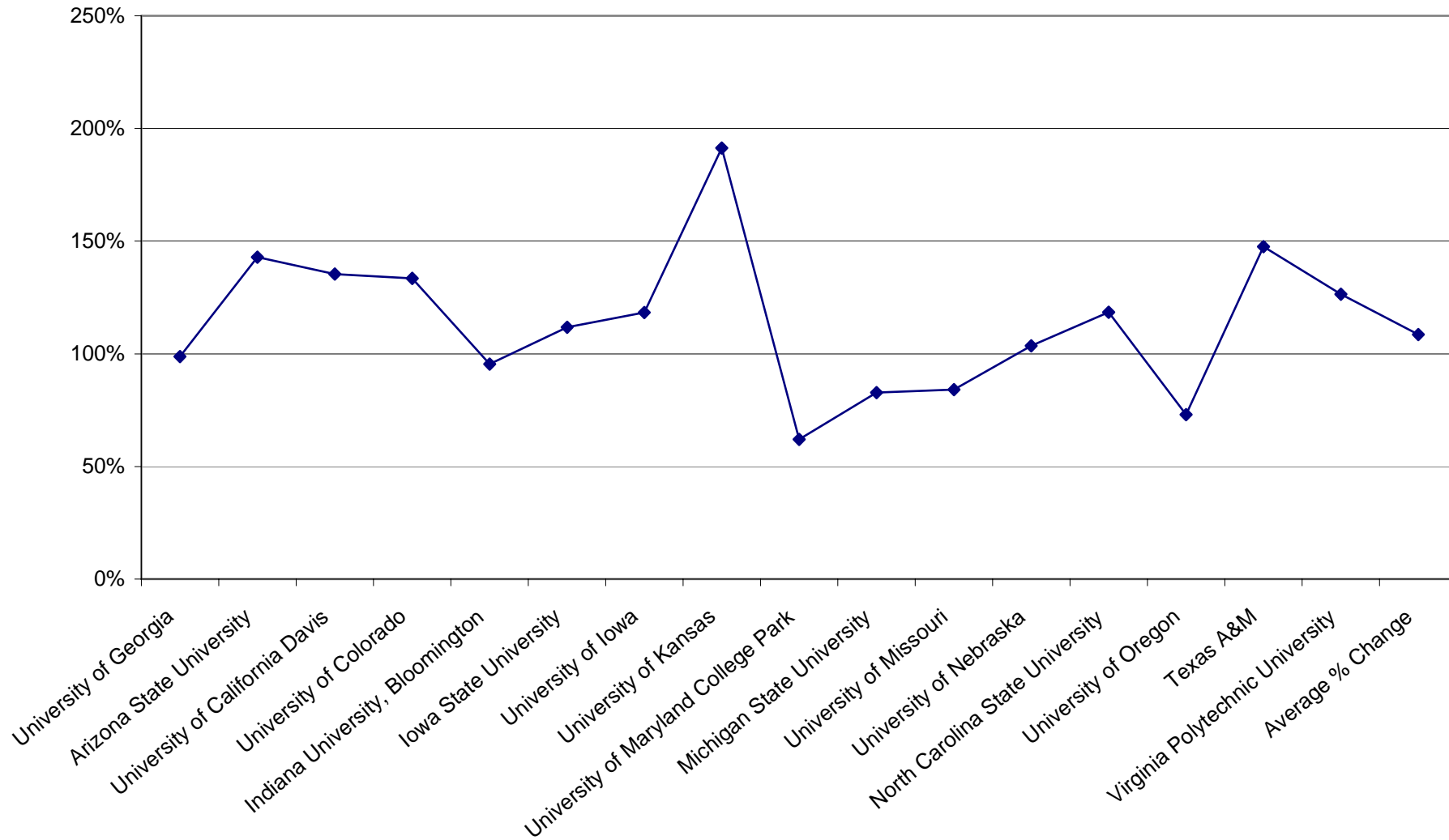
<i>BOR Peer Institutions</i>	<i>AY 99-00</i>	<i>AY 00-01</i>	<i>AY 01-02</i>	<i>AY 02-03</i>	<i>AY 03-04</i>	<i>AY 04-05</i>	<i>AY 05-06</i>	<i>AY 06-07</i>	<i>AY 07-08</i>	<i>PRELIM AY 08-09</i>	<i>9 year % Change</i>
University of Georgia	\$3,034	\$3,276	\$3,418	\$3,616	\$4,078	\$4,272	\$4,628	\$4,928	\$5,285	\$6,030	99%
Arizona State University	\$2,261	\$2,346	\$2,488	\$2,585	\$3,595	\$4,064	\$4,406	\$4,688	\$4,971	\$5,491	143%
University of California Davis	\$4,034	\$4,072	\$4,595	\$4,630	\$6,438	\$7,557	\$7,457	\$7,576	\$8,124	\$9,497	135%
University of Colorado	\$3,118	\$3,188	\$3,357	\$3,566	\$4,020	\$4,341	\$5,372	\$5,643	\$6,635	\$7,278	133%
Indiana University, Bloomington	\$4,212	\$4,405	\$4,735	\$5,115	\$6,517	\$6,777	\$7,112	\$7,460	\$7,837	\$8,231	95%
Iowa State University	\$3,004	\$3,132	\$3,442	\$4,110	\$5,028	\$5,426	\$5,634	\$5,860	\$6,161	\$6,360	112%
University of Iowa	\$2,997	\$3,204	\$3,522	\$4,191	\$4,993	\$5,396	\$5,612	\$6,135	\$6,293	\$6,544	118%
University of Kansas	\$2,518	\$2,725	\$2,884	\$3,484	\$4,101	\$4,737	\$5,413	\$6,153	\$6,600	\$7,334	191%
University of Maryland College Park	\$4,939	\$5,136	\$5,341	\$5,670	\$6,759	\$7,410	\$7,821	\$7,906	\$7,969	\$8,005	62%
Michigan State University	\$5,589	\$5,432	\$5,911	\$6,412	\$7,044	\$7,352	\$8,108	\$8,887	\$9,912	\$10,264	84%
University of Missouri	\$4,581	\$4,726	\$4,887	\$5,552	\$6,558	\$7,100	\$6,960	\$7,308	\$8,098	\$8,432	84%
University of Nebraska	\$3,277	\$3,450	\$3,760	\$4,125	\$4,770	\$5,267	\$5,540	\$5,867	\$6,216	\$6,668	103%
North Carolina State University	\$2,414	\$2,814	\$3,302	\$3,827	\$3,970	\$4,282	\$4,338	\$4,783	\$5,117	\$5,274	118%
University of Oregon	\$3,810	\$3,819	\$4,071	\$4,230	\$4,914	\$5,490	\$5,613	\$5,838	\$6,036	\$6,591	73%
Texas A&M	\$3,168	\$3,374	\$3,722	\$4,748	\$5,051	\$5,955	\$6,399	\$6,966	\$7,335	\$7,844	148%
Virginia Polytechnic University	\$3,620	\$3,640	\$3,664	\$3,936	\$5,095	\$5,838	\$6,378	\$6,973	\$7,397	\$8,198	126%
Average % Change	\$3,536	\$3,671	\$3,944	\$4,362	\$5,183	\$5,704	\$6,049	\$6,436	\$6,874	\$7,378	109%

Board of Regents Peer Comparison Group
Undergraduate Resident Tuition and Fees
Cummulative Percentage Increase from 1999-2000 to 2008-09



Board of Regents Peer Comparison Group

Undergraduate Resident Tuition and Fees
Percentage Increase 1990-91 to 2008-09



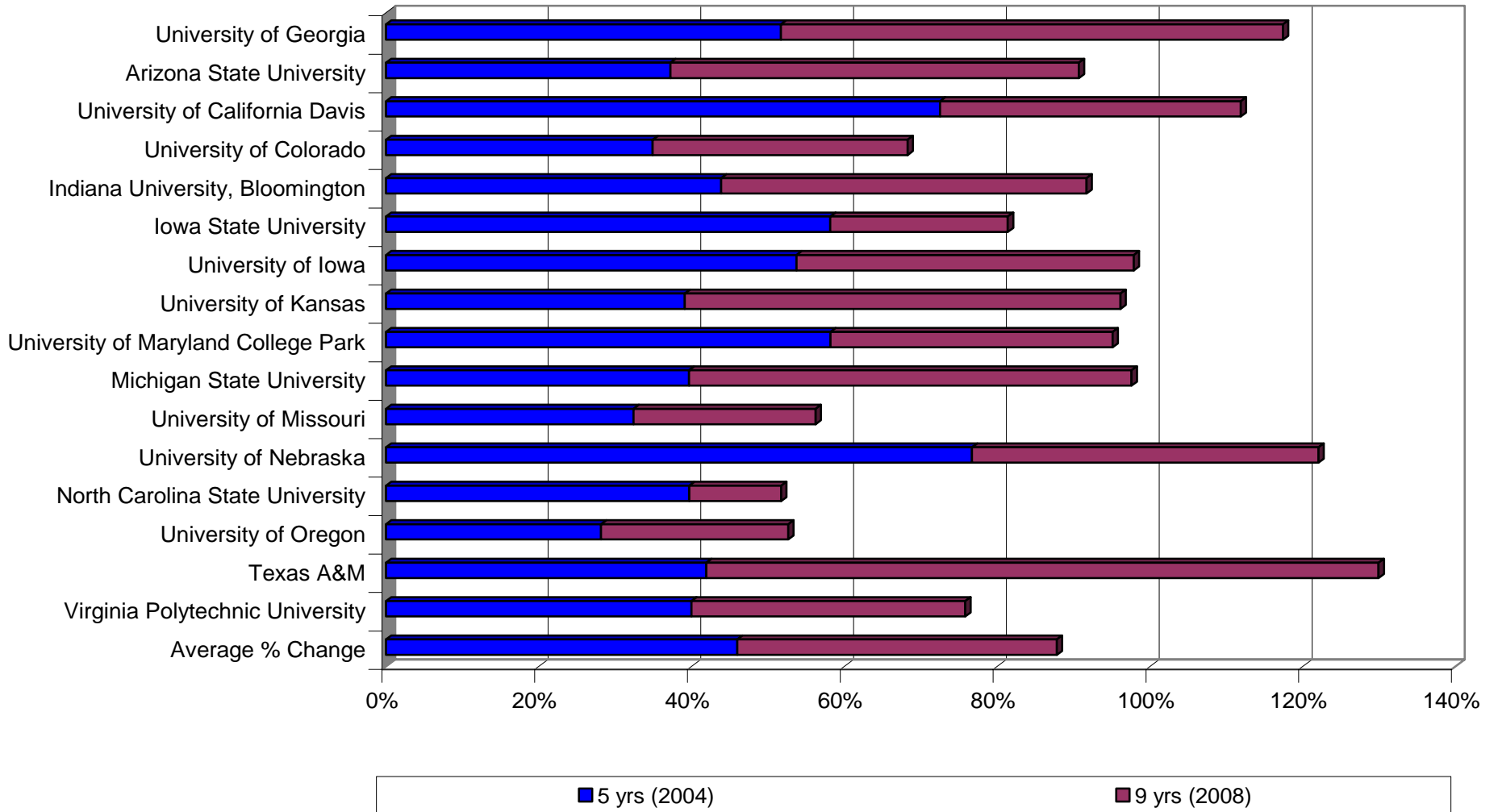
Board of Regents Peer Comparison Group

Comparison of Annual Tuition and Fees Charged to Undergraduate Non-resident Students

<i>BOR Peer Institutions</i>	<i>AY 99-00</i>	<i>AY 00-01</i>	<i>AY 01-02</i>	<i>AY 02-03</i>	<i>AY 03-04</i>	<i>AY 04-05</i>	<i>AY 05-06</i>	<i>AY 06-07</i>	<i>AY 07-08</i>	<i>PRELIM AY 08-09</i>	<i>9 year % Change</i>
University of Georgia	\$10,276	\$10,794	\$11,314	\$12,986	\$14,854	\$15,588	\$16,848	\$17,881	\$19,254	\$22,342	117%
Arizona State University	\$9,413	\$9,802	\$10,354	\$11,105	\$12,115	\$12,919	\$15,095	\$15,847	\$17,003	\$17,952	91%
University of California Davis	\$14,208	\$14,686	\$15,669	\$16,974	\$20,648	\$24,513	\$24,449	\$26,260	\$27,744	\$30,105	112%
University of Colorado	\$15,898	\$16,506	\$17,367	\$18,910	\$20,336	\$21,453	\$22,826	\$23,539	\$24,797	\$26,756	68%
Indiana University, Bloomington	\$12,919	\$13,461	\$14,469	\$15,726	\$17,552	\$18,590	\$19,508	\$20,472	\$22,316	\$24,769	92%
Iowa State University	\$9,564	\$9,974	\$10,776	\$12,802	\$14,370	\$15,128	\$15,724	\$16,354	\$16,919	\$17,350	81%
University of Iowa	\$10,439	\$10,966	\$11,950	\$13,833	\$15,285	\$16,048	\$16,998	\$18,359	\$19,465	\$20,658	98%
University of Kansas	\$9,121	\$9,493	\$9,811	\$10,687	\$11,577	\$12,691	\$13,866	\$15,123	\$16,107	\$17,891	96%
University of Maryland College Park	\$11,827	\$12,668	\$13,413	\$14,434	\$17,433	\$18,710	\$20,145	\$21,345	\$22,208	\$23,076	95%
Michigan State University	\$12,992	\$13,056	\$14,214	\$15,423	\$16,948	\$18,148	\$19,808	\$21,476	\$23,714	\$25,672	98%
University of Missouri	\$12,495	\$12,895	\$13,332	\$14,705	\$16,005	\$16,547	\$16,085	\$16,890	\$18,754	\$19,523	56%
University of Nebraska	\$7,785	\$8,205	\$9,362	\$10,718	\$12,353	\$13,758	\$14,450	\$15,317	\$16,236	\$17,288	122%
North Carolina State University	\$11,580	\$11,980	\$13,294	\$15,111	\$15,818	\$16,180	\$16,536	\$16,981	\$17,315	\$17,572	52%
University of Oregon	\$13,197	\$13,839	\$14,493	\$15,219	\$16,350	\$16,914	\$17,445	\$18,252	\$18,792	\$20,148	53%
Texas A&M	\$9,648	\$9,824	\$10,052	\$11,288	\$12,131	\$13,695	\$14,679	\$15,216	\$15,675	\$22,184	130%
Virginia Polytechnic University	\$11,844	\$12,128	\$12,488	\$13,552	\$15,029	\$16,581	\$17,837	\$19,049	\$19,775	\$20,825	76%
Average % Change	\$11,450	\$11,892	\$12,647	\$13,967	\$15,550	\$16,716	\$17,644	\$18,648	\$19,755	\$21,507	88%

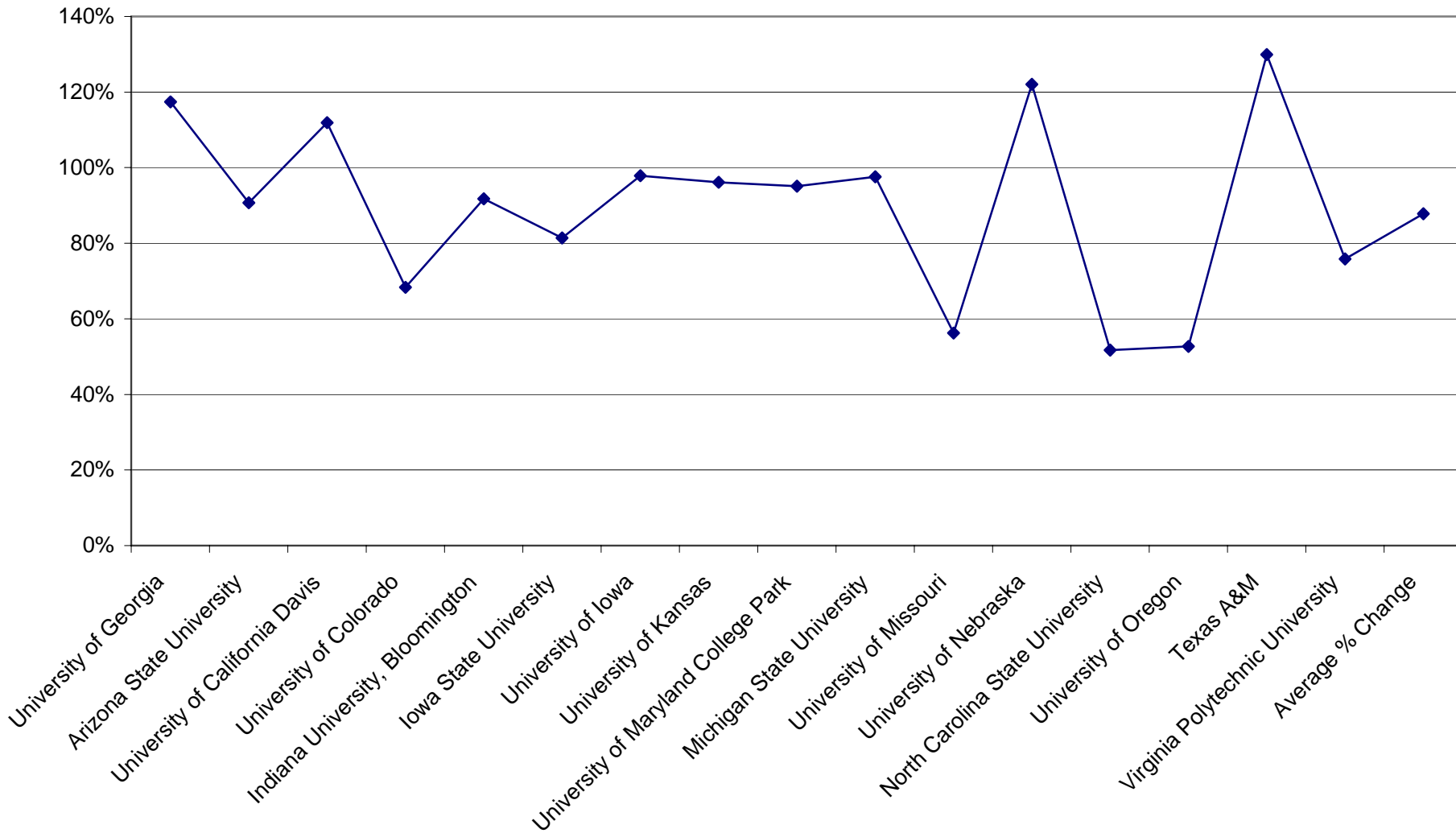
Board of Regents Peer Comparison Group

Undergraduate Non-resident Tuition and Fees
Cummulative Percentage Increase from 1999-2000 to 2008-09



Board of Regents Peer Comparison Group

**Undergraduate Nonresident Tuition and Fees
Percentage Increase 1990-91 to 2008-09**



Southern Regional Education Board

Undergraduate

Residents

- The average 9-year increase in tuition and fees for residents was 108%. The University of Georgia's increase was 99%, 9th highest of 16.
- The largest increases occurred at University of Oklahoma (202%), University of Texas (173%), and University of South Carolina (136%).
- The lowest increases were at University of Maryland College Park (62%), University of Mississippi (75%), and University of Florida (76%).
- Over the past 5 years University of Texas has had the highest increase (104%), followed by University of Oklahoma (98%) and University of Kentucky (70%).
- Over the past 5 years University of Maryland has had the lowest increase (18%), followed by Louisiana State University (30%) and University of North Carolina (33%).

Non-Residents

- The average 9-year increase in tuition and fees for non-residents was 105%. The University of Georgia's increase was 117%, 6th highest of 16.
- The largest increases occurred at Texas A&M (182%), University of Oklahoma (156%), and University of South Carolina (133%).
- The lowest increases were at University of Delaware (60%), University of Kentucky (72%), and University of Virginia (79%).
- Over the past 5 years University of Texas has had the highest increase (140%), followed by University of Oklahoma (70%) and University of Alabama (59%).
- Over the past 5 years University of Delaware has had the lowest increase (32%), followed by University of Maryland (32%) and University of Arkansas (33%).

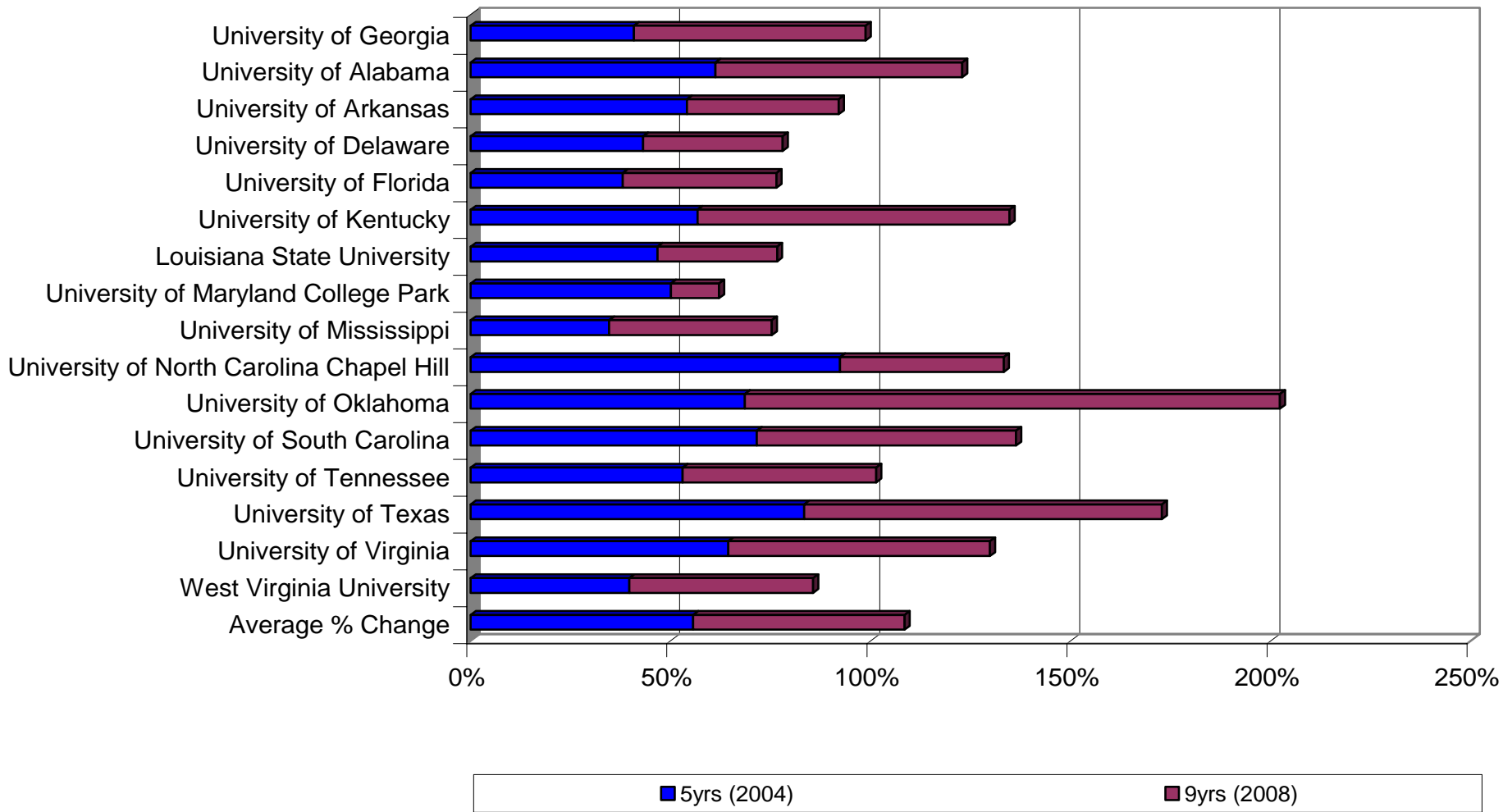
Note: 2008-2009 figures are preliminary.

Southern Regional Education Board

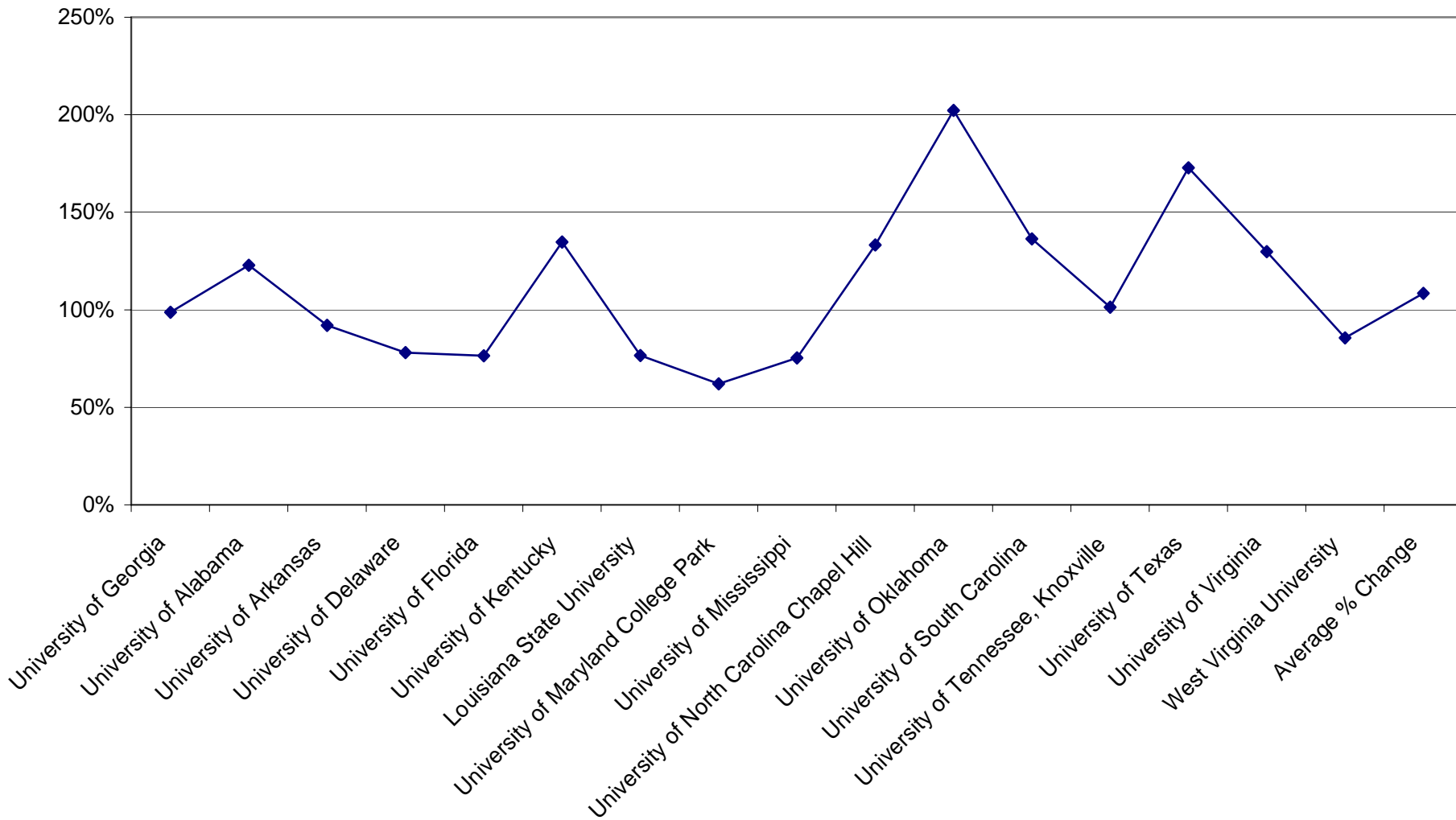
Comparison of Annual Tuition and Fees Charged to Undergraduate Resident Students

<i>SREB Flagship Institutions</i>	<i>AY 99-00</i>	<i>AY 00-01</i>	<i>AY 01-02</i>	<i>AY 02-03</i>	<i>AY 03-04</i>	<i>AY 04-05</i>	<i>AY 05-06</i>	<i>AY 06-07</i>	<i>AY 07-08</i>	<i>PRELIM AY 08-09</i>	<i>9 year % Change</i>
University of Georgia	\$3,034	\$3,276	\$3,418	\$3,616	\$4,078	\$4,272	\$4,628	\$4,928	\$5,285	\$6,030	99%
University of Alabama	\$2,872	\$3,014	\$3,292	\$3,556	\$4,134	\$4,630	\$4,864	\$5,278	\$5,700	\$6,400	123%
University of Arkansas	\$3,333	\$3,575	\$3,880	\$4,456	\$4,768	\$5,135	\$5,494	\$5,808	\$6,038	\$6,399	92%
University of Delaware	\$4,858	\$5,004	\$5,290	\$5,640	\$6,498	\$6,954	\$7,318	\$7,740	\$8,150	\$8,646	78%
University of Florida	\$2,141	\$2,256	\$2,444	\$2,581	\$2,780	\$2,955	\$3,094	\$3,206	\$3,256	\$3,777	76%
University of Kentucky	\$3,296	\$3,446	\$3,735	\$3,975	\$4,547	\$5,165	\$5,812	\$6,510	\$7,096	\$7,736	135%
Louisiana State University	\$2,880	\$3,395	\$3,491	\$3,536	\$3,910	\$4,226	\$4,419	\$4,449	\$4,543	\$5,086	77%
University of Maryland College Park	\$4,939	\$5,136	\$5,341	\$5,670	\$6,759	\$7,410	\$7,821	\$7,906	\$7,969	\$8,005	62%
University of Mississippi	\$3,053	\$3,153	\$3,626	\$3,916	\$3,916	\$4,110	\$4,320	\$4,602	\$4,932	\$5,352	75%
University of North Carolina Chapel Hill	\$2,314	\$2,710	\$3,219	\$3,856	\$4,072	\$4,451	\$4,613	\$5,033	\$5,340	\$5,397	133%
University of Oklahoma	\$2,456	\$2,581	\$2,713	\$2,929	\$3,741	\$4,140	\$4,408	\$5,110	\$5,607	\$7,423	202%
University of South Carolina	\$3,740	\$3,868	\$4,064	\$4,984	\$5,778	\$6,416	\$7,314	\$7,808	\$8,346	\$8,838	136%
University of Tennessee, Knoxville	\$3,104	\$3,362	\$3,784	\$4,056	\$4,450	\$4,748	\$5,290	\$5,622	\$5,932	\$6,250	101%
University of Texas	\$3,128	\$3,575	\$3,766	\$3,950	\$4,188	\$5,735	\$6,972	\$7,630	\$7,670	\$8,532	173%
University of Virginia	\$4,130	\$4,160	\$4,421	\$4,780	\$6,149	\$6,790	\$7,370	\$8,035	\$8,690	\$9,490	130%
West Virginia University	\$2,748	\$2,836	\$2,948	\$3,240	\$3,548	\$3,838	\$4,164	\$4,476	\$4,722	\$5,100	86%
Average % Change	\$3,252	\$3,459	\$3,715	\$4,046	\$4,582	\$5,061	\$5,494	\$5,884	\$6,205	\$6,779	108%

Southern Regional Education Board Flagship Institutions
Undergraduate Resident Tuition and Fees
Cummulative Percentage Increase from 1999-2000 to 2008-09



Southern Regional Education Board Flagship Institutions
Flagship Institutions - Undergraduate Resident Tuition and Fees
Percentage Increase 1990-91 to 2008-09

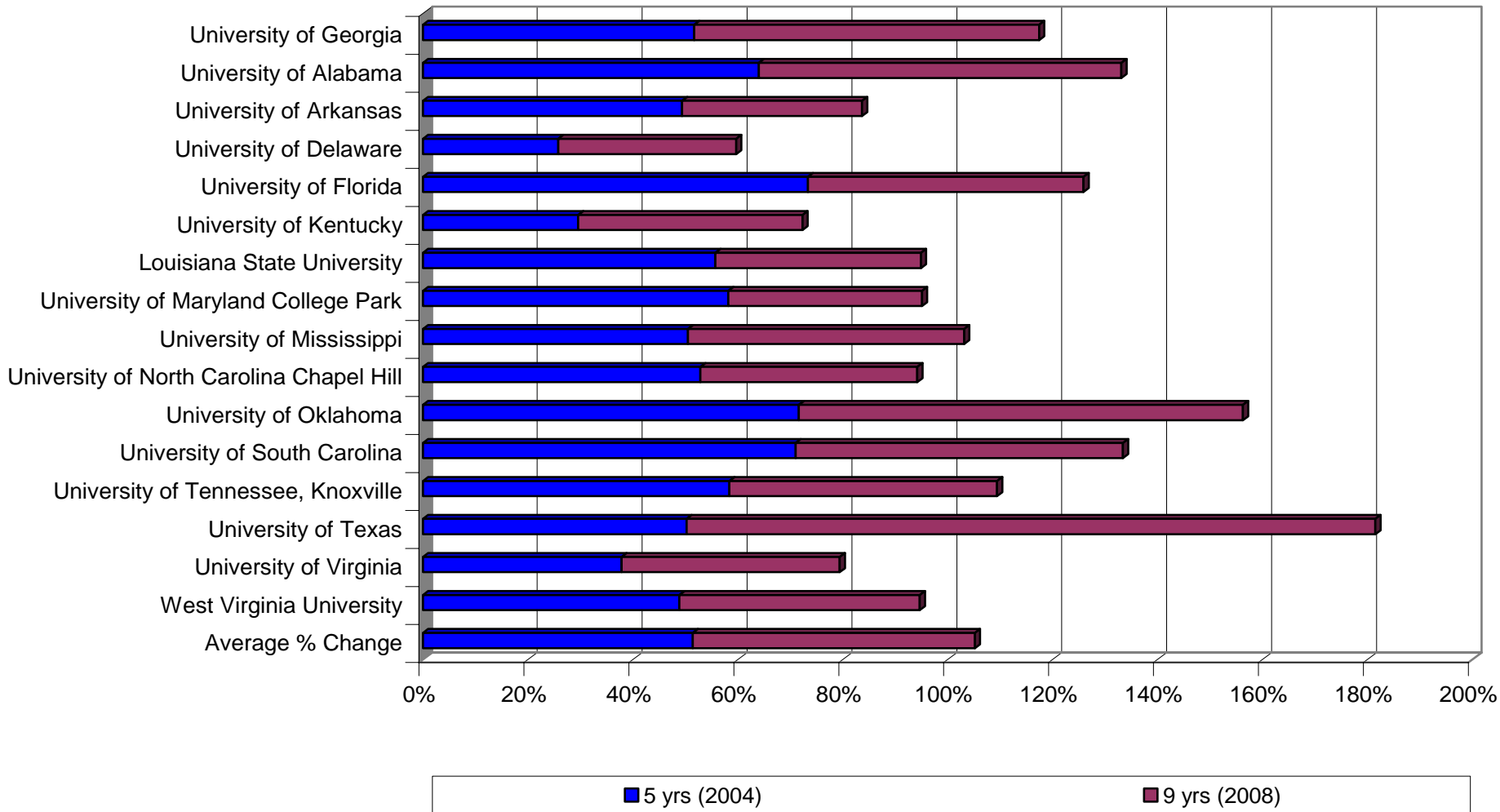


Southern Regional Education Board

Comparison of Annual Tuition and Fees Charged to Undergraduate Non-resident Students

<i>SREB Flagship Institutions</i>	<i>AY 99-00</i>	<i>AY 00-01</i>	<i>AY 01-02</i>	<i>AY 02-03</i>	<i>AY 03-04</i>	<i>AY 04-05</i>	<i>AY 05-06</i>	<i>AY 06-07</i>	<i>AY 07-08</i>	<i>PRELIM AY 08-09</i>	<i>9 year % Change</i>
University of Georgia	\$10,276	\$10,794	\$11,314	\$12,986	\$14,854	\$15,588	\$16,848	\$17,881	\$19,254	\$22,342	117%
University of Alabama*	\$7,722	\$8,162	\$8,912	\$9,624	\$11,294	\$12,664	\$13,516	\$15,294	\$16,518	\$18,000	133%
University of Arkansas	\$8,317	\$8,867	\$9,438	\$10,828	\$11,518	\$12,425	\$13,222	\$13,942	\$14,492	\$15,276	84%
University of Delaware	\$13,228	\$13,754	\$14,380	\$15,170	\$16,028	\$16,640	\$17,474	\$18,450	\$19,400	\$21,126	60%
University of Florida	\$9,129	\$9,594	\$10,332	\$12,046	\$13,808	\$15,827	\$17,222	\$17,791	\$17,841	\$20,622	126%
University of Kentucky	\$9,216	\$9,666	\$10,275	\$10,527	\$11,227	\$11,945	\$12,798	\$13,970	\$14,896	\$15,884	72%
Louisiana State University	\$7,080	\$8,695	\$8,791	\$8,836	\$9,210	\$11,026	\$12,719	\$12,749	\$12,843	\$13,800	95%
University of Maryland College Park	\$11,827	\$12,668	\$13,413	\$14,434	\$17,433	\$18,710	\$20,145	\$21,345	\$22,208	\$23,076	95%
University of Mississippi*	\$6,155	\$7,106	\$8,172	\$8,826	\$8,826	\$9,264	\$9,744	\$10,566	\$11,436	\$12,504	103%
University of North Carolina Chapel Hill	\$11,480	\$11,876	\$13,211	\$15,140	\$15,920	\$17,549	\$18,411	\$19,681	\$20,988	\$22,295	94%
University of Oklahoma	\$6,791	\$6,916	\$7,437	\$8,077	\$10,254	\$11,658	\$12,301	\$13,399	\$14,721	\$17,404	156%
University of South Carolina	\$9,814	\$10,154	\$11,004	\$13,104	\$15,116	\$16,784	\$18,956	\$20,236	\$21,632	\$22,908	133%
University of Tennessee, Knoxville	\$9,172	\$10,166	\$11,570	\$12,408	\$13,532	\$14,528	\$16,360	\$17,188	\$18,174	\$19,208	109%
University of Texas*	\$9,608	\$10,025	\$10,096	\$10,490	\$11,268	\$14,435	\$16,310	\$20,364	\$24,544	\$27,047	182%
University of Virginia	\$16,603	\$17,409	\$18,453	\$19,990	\$22,169	\$22,890	\$24,290	\$26,135	\$27,940	\$29,790	79%
West Virginia University*	\$8,100	\$8,362	\$8,832	\$9,710	\$10,768	\$12,060	\$12,874	\$13,840	\$14,600	\$15,770	95%
Average % Change	\$9,657	\$10,263	\$10,977	\$12,012	\$13,327	\$14,625	\$15,824	\$17,052	\$18,218	\$19,816	105%

Southern Regional Education Board Flagship Institutions
Undergraduate Nonresident Tuition and Fees
Cummulative Percentage Increase from 1999-2000 to 2008-09



Southern Regional Education Board Flagship Institutions

Undergraduate Nonresident Tuition and Fees
Percentage Increase 1990-91 to 2008-09

