



Revision of the Carnegie Classification

Debbie Holliday, Data Management Specialist I

May 2006

Revision of the Carnegie Classifications

The Carnegie Commission on Higher Education developed a classification of colleges and universities in 1970 to support its program of research and policy analysis. The “Carnegie Classification” was published for use by other researchers in 1973, and updated in 1976, 1987, 1994 and 2000.

This will be very helpful for identifying peers and for understanding how an institution compares with others on key characteristics. The system represents a major increase in classification complexity, accompanied by greater flexibility.

In [November 2005](#), [five new classification](#) schemes were released. In February 2006 the “[Carnegie Classic](#)” now called the [Basic Classification](#) was officially released. Carnegie also developed two elective schemes related to community engagement and undergraduate education, implemented in March 2006. These two classifications will rely on voluntary participation by institutions.

For detailed information see web site at <http://www.carnegiefoundation.org/classifications/>. Go to the Classification Descriptions.

Data sources – All classifications are snapshots of institutional attributes and behavior based on IPEDS data (2003-2004). Also the Basic Classification expenditure data are from Survey Research and Development Expenditures, and research staff data are from the Survey of Graduate Students and Postdoctorates in Science and Engineering for fall 2002. The Undergraduate Profile, Enrollment Profile and Size & Setting data is from IPEDS Fall Enrollment Survey and the College Board Annual Survey of Colleges.

Basic Classification

1. highest degree granted
2. number and percent of degrees awarded
3. concentration of majors in arts and sciences (baccalaureate colleges only)
4. measure of research activity (Doctorate-granting institutions only) using multi-measures instead of looking only at Federal funding (dollars)
5. specialization
6. designation as a tribal college – control, size, rural, suburban, or urban service area, single versus multi-campus organization and special use

Summary of five new classification schemes released in November 2005

Undergraduate Instructional Program

1. highest level of undergraduate degrees awarded (associate’s or bachelor’s)
2. bachelor’s degree majors in the arts and sciences and in professional fields
3. extent to which an institution awards graduate degrees in the same fields in which it awards undergraduate degrees

Graduate Instructional Program

1. highest level of graduate degrees awarded (master’s/professional or doctoral)
2. number of fields represented by the degrees awarded
3. mix or concentration of degrees by broad disciplinary domain

Enrollment Profile

1. whether the institution has students enrolled at the graduate/professional levels
2. two-year versus four-year degrees (undergraduate institutions only)
3. distribution of full-time equivalent students across the undergraduate versus graduate levels (institutions with both undergraduate and graduate/professional students)

Undergraduate Profile

1. students who attend part- or full-time
2. admissions test scores of first-year students
3. entering students who transfer in from another institution

Size & Setting

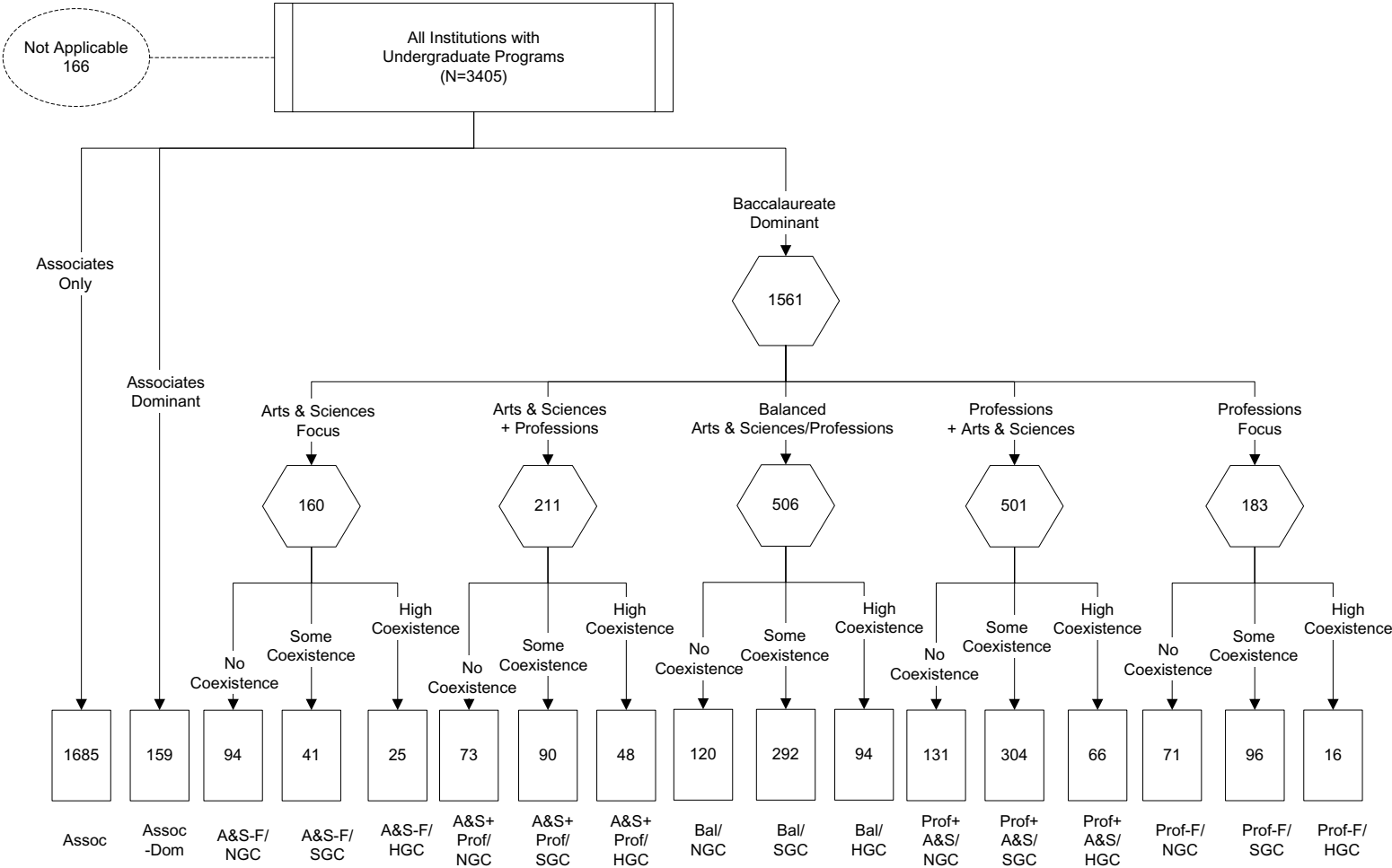
1. size
2. residential character (determined by the proportion of undergraduates living in institutionally-owned, operated, or affiliated housing and the proportion of degree-seeking undergraduates who attend full-time)

Elective (piloted in March)

1. Community Engagement
2. Undergraduate Education

The logic charts for the five classification schemes are illustrated on the following pages.

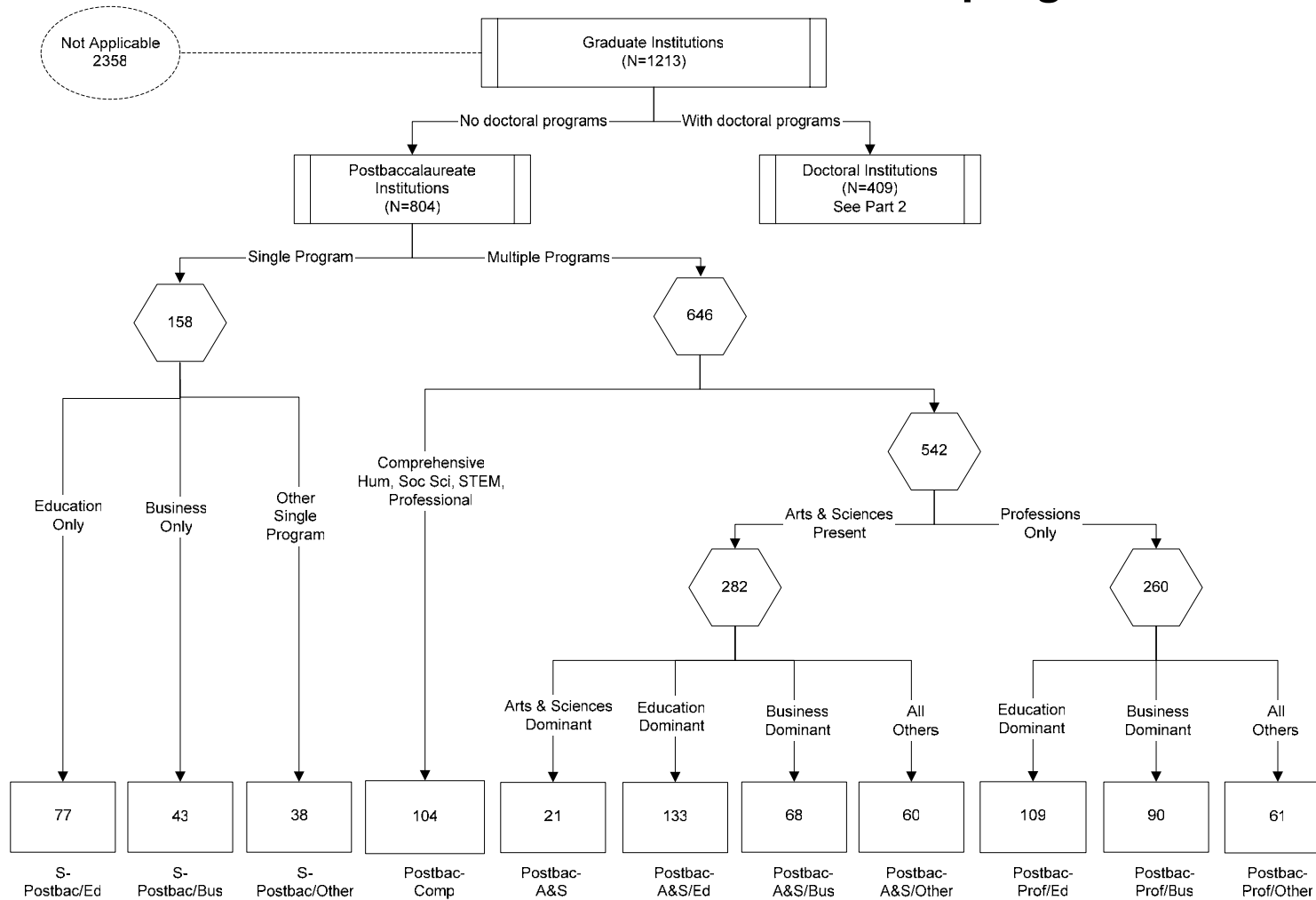
Undergraduate Instructional Program



Source: <http://www.carnegiefoundation.org/classifications/>

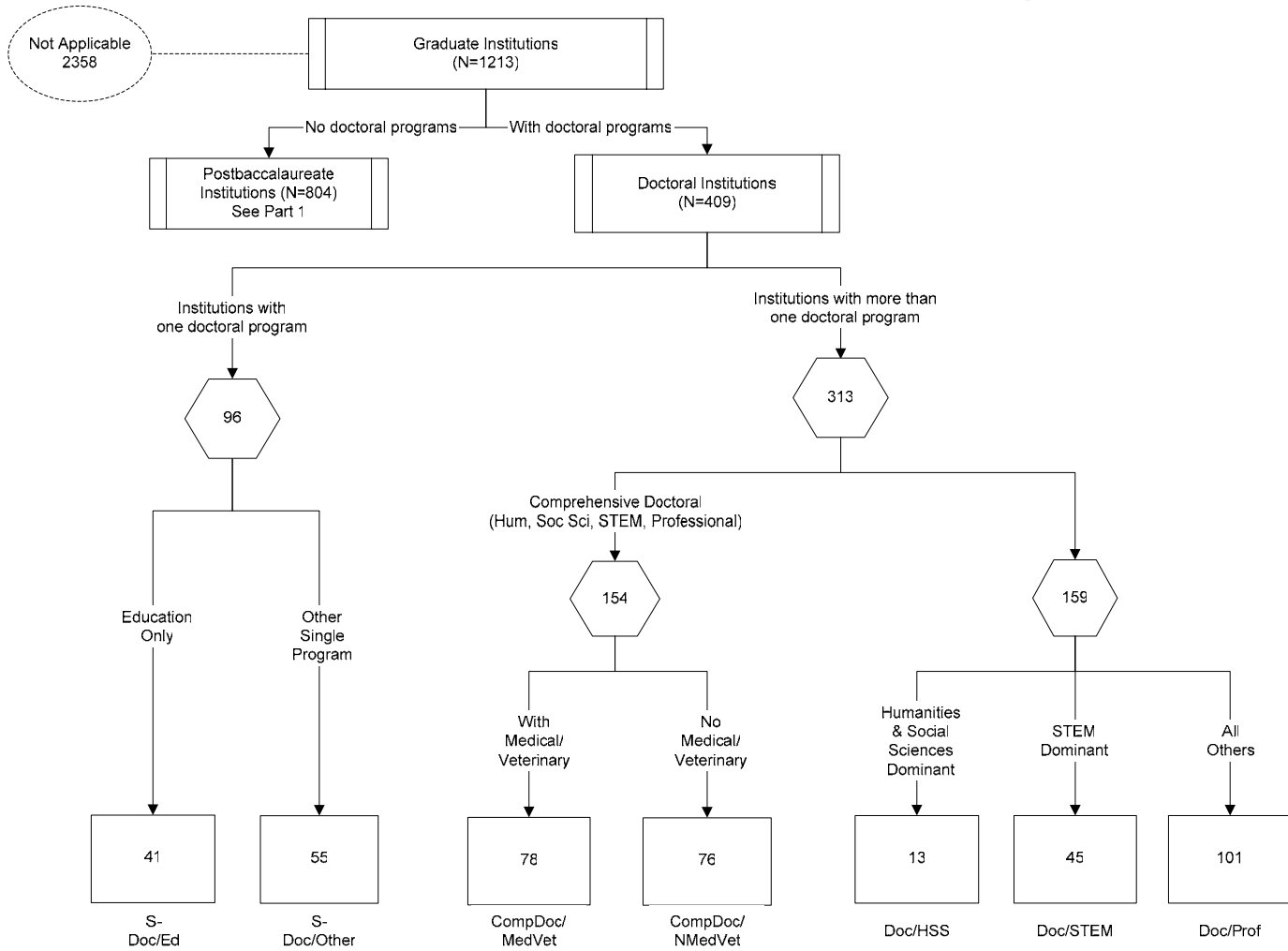
Graduate Instructional Program

Part 1: Institutions without doctoral programs

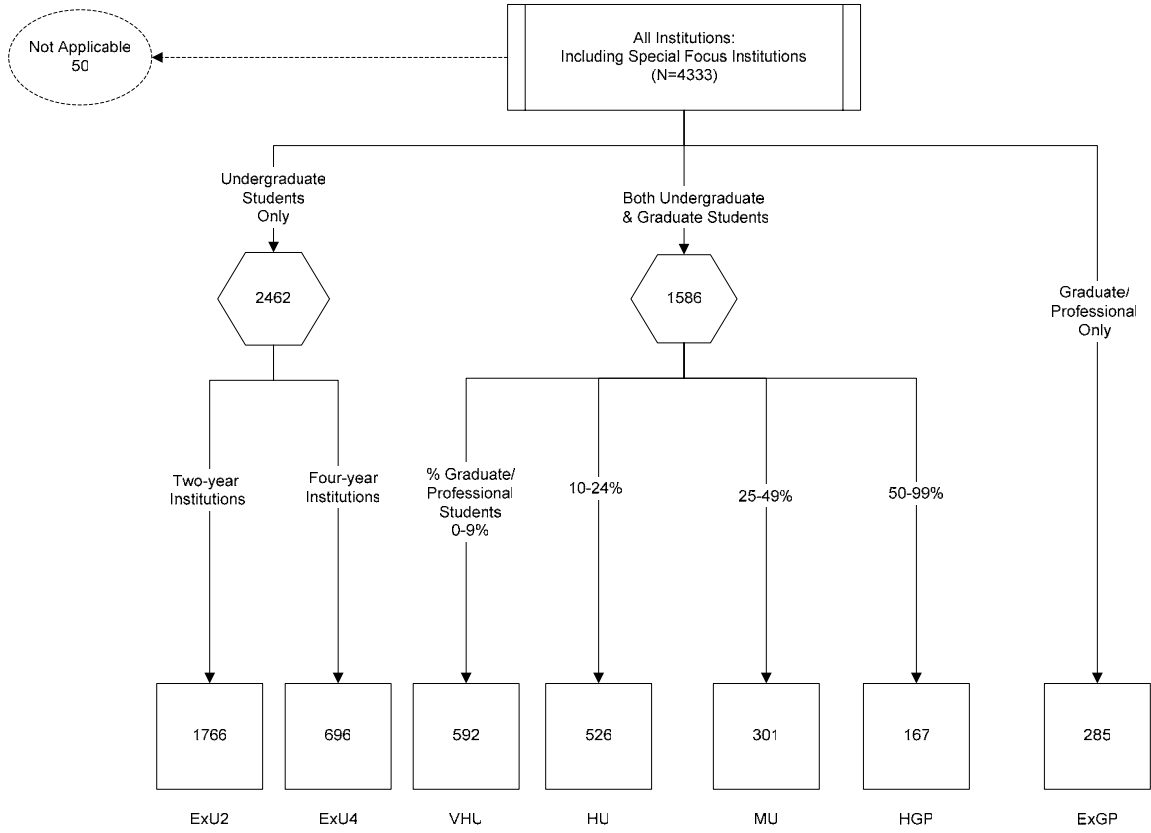


Graduate Instructional Program

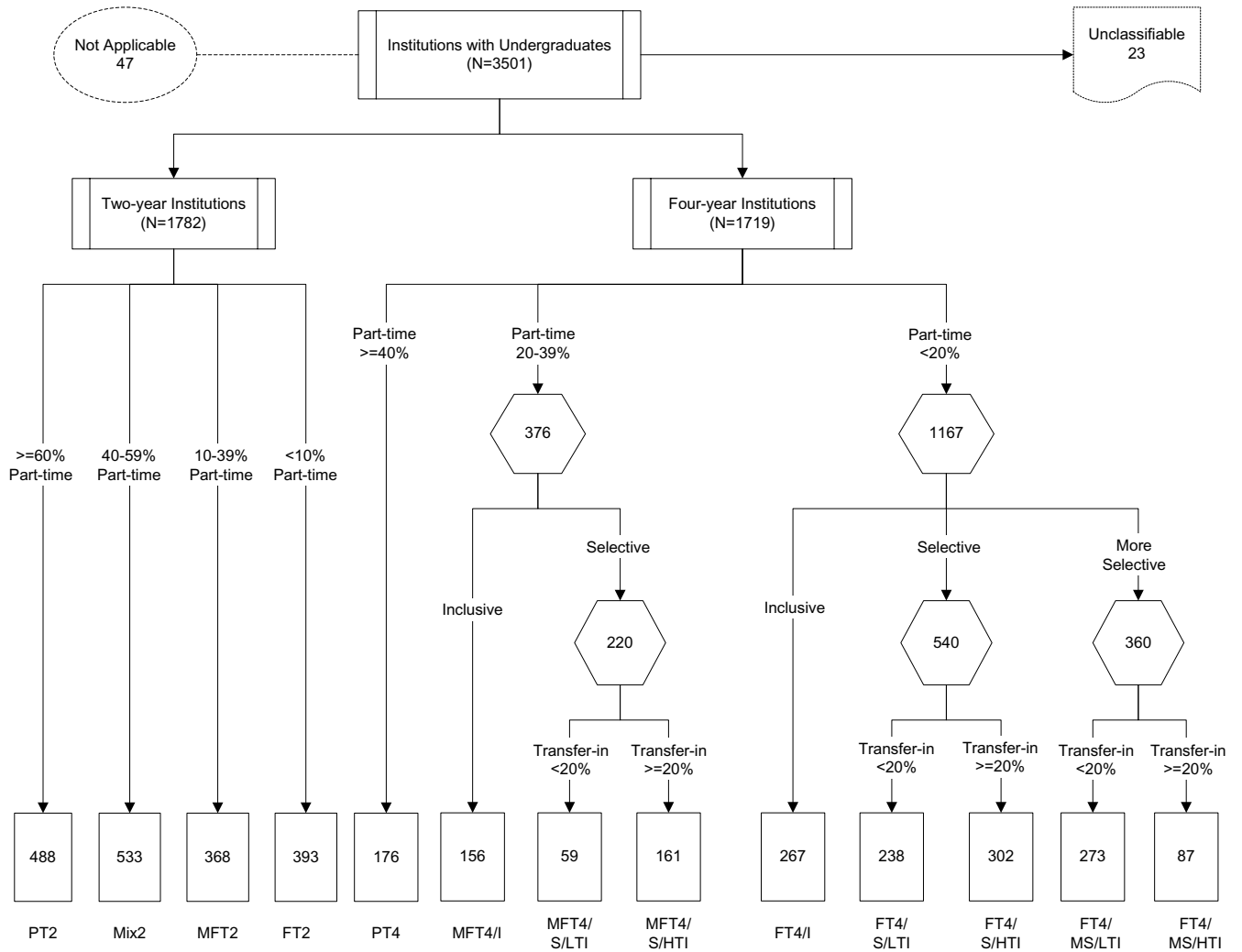
Part 2: Institutions with doctoral programs



Enrollment Profile



Undergraduate Profile



Size and Setting

