



**Annual Tuition and Fees Comparison
Southern Universities Group Institutions
1990-91 – 2005-06**

Denise C. Gardner, Associate Director

Fall 2005

The University of Georgia (UGA) is a member of the Southern University Group (SUG), a data-exchange group comprised of 31 major research and land grant universities primarily in the states within the Southern Regional Education Board. SUG provides a forum for the exchange of information on university management and planning, and the sharing of comparative data. This report presents information collected from 1990-91 through 2005-06 on resident and non-resident annual tuition and fees for undergraduate, graduate, and law students. Twenty-nine of the 31 SUG institutions had fifteen years of undergraduate and graduate data, while 18 provided law school figures. Selected results are highlighted below, followed by charts and full data tables.

Undergraduate

- The average 15-year increase in tuition and fees for residents was 189%. The University of Georgia's increase was smaller than this average, at 131% (23rd of 29). UGA's non-resident increase of 217% (11th) was slightly higher than the SUG average of 200%.
- The largest 15-year increase occurred at the four institutions in Texas, with the University of Texas posting a nearly 600% jump in resident tuition and fees and an almost 300% increase in non-resident tuition and fees.
- The lowest increases for residents were at Mississippi, Mississippi State, and Virginia Tech (approximately double), while tuition and fees for non-residents only increased 1.5 at times Louisiana State and Virginia Tech.
- Over the past five years, Clemson University had the highest increase for residents (146%), whereas Louisiana State only raised tuition and fees by 30%.

Graduate

- The average 15-year increase in tuition and fees for residents was 207%. The University of Georgia's increase was slightly below this average (168%, 18th of 29). UGA's non-resident increase of 272% (7th) was higher than the SUG average of 228%.
- The largest 15-year increase in resident tuition and fees occurred at Texas and Texas A&M (over 600%). The biggest increases in non-resident tuition and fees were at Clemson (647%) and South Carolina (569%).
- The lowest increases for residents were at Mississippi and Mississippi State (approximately double), while tuition and fees for non-residents only rose 1.5 times for several schools (Louisiana State, Virginia, and Oklahoma).

Law

- For the eighteen SUG schools with fifteen years of law school tuition and fee data, the average increase for residents was 308%. The University of Georgia's increase was slightly below this average (283%, 10th of 18). UGA's non-resident increase of 319% (5th) was higher than the SUG average of 255%.
- At the University of North Carolina, resident tuition and fees increased over 900%, the largest by far among the SUG schools. A number of schools posted over 300% in increases in non-resident tuition and fees.
- Houston had the smallest increases: 175% for residents and 149% for non-residents.

Southern Universities Group
Comparison of Annual Tuition and Fees Charged to Undergraduate Students

Institution	1990-91		1991-92		1992-93		1993-94		1994-95		1995-96	
	Resident	Non-Res	Resident	Non-Res	Resident	Non-Res	Resident	Non-Res	Resident	Non-Res	Resident	Non-Res
University of Alabama	\$1,810	\$4,486	\$1,972	\$4,908	\$2,068	\$5,166	\$2,172	\$5,424	\$2,260	\$5,642	\$2,374	\$5,924
UA - Birmingham	1,920	3,660	2,081	3,941	2,238	4,248	2,358	4,458	2,511	4,731	2,604	4,914
Auburn University	1,476	4,428	1,596	4,788	1,755	5,265	1,950	5,850	2,100	6,300	2,250	6,750
University of Arkansas	1,598	3,950	1,632	4,368	2,367	5,730	2,490	6,028	2,557	6,172	2,708	6,435
Arizona State University											1,950	7,978
University of Delaware	3,126	7,916	3,516	8,686	3,722	9,382	3,948	10,048	4,100	10,630	4,286	11,156
Florida State University	1,307	4,619	1,492	5,631	1,679	6,438	1,780	6,682	1,798	6,700	1,798	6,700
University of Florida											1,705	6,607
University of Georgia	2,001	5,313	2,076	5,520	2,175	5,757	2,250	5,940	2,352	6,150	2,540	6,827
Georgia Institute of Technology	2,052	6,054	2,118	6,279	2,205	6,531	2,277	6,732	2,343	6,933	2,457	7,638
Georgia State University	1,870	5,848	1,942	6,082	1,952	6,258	2,019	6,452	2,154	6,744	2,249	7,424
University of Kentucky	1,710	4,710	1,844	5,084	1,998	5,358	2,278	6,198	2,510	6,870	2,594	7,114
Louisiana State University	2,043	5,243	2,043	5,243	2,173	5,473	2,625	5,925	2,645	5,945	2,663	5,963
University of Maryland	2,267	6,323	2,429	7,297	2,778	8,382	3,179	8,783	3,480	9,284	3,794	9,738
University of Mississippi	2,059	3,241	2,221	3,683	2,435	4,395	2,456	4,916	2,546	5,006	2,546	5,366
Mississippi State University	2,061	3,243	2,223	3,685	2,473	4,433	2,473	4,933	2,561	5,021	2,591	5,411
University of Southern Mississippi	1,936	3,118	2,108	3,570	2,392	4,352	2,392	4,852	2,428	4,888	2,468	5,288
University of North Carolina	1,084	5,751	1,248	7,116	1,284	7,868	1,454	8,496	1,569	9,095	1,686	9,802
North Carolina State University	1,126	5,793	1,254	7,122	1,318	7,902	1,421	8,463	1,584	9,110	1,732	9,848
University of Oklahoma	1,574	4,530	1,750	4,941	1,768	4,959	1,901	5,348	1,918	5,365	2,024	5,714
Oklahoma State University	1,568	4,525	1,759	4,950	1,767	4,958	1,882	5,328	1,892	5,339	2,148	5,838
Clemson University	2,470	6,660	2,630	7,028	2,762	7,380	2,954	7,896	3,036	8,116	3,112	8,316
University of South Carolina	2,560	6,400	2,686	6,716	2,868	7,171	3,090	7,808	3,196	8,074	3,280	8,324
University of Tennessee	1,712	4,916	1,788	5,154	1,898	5,498	1,982	5,762	2,052	5,986	2,164	6,294
University of Houston	1,020	4,140	1,160	4,400	1,410	5,550	1,530	5,610	1,602	5,892	1,666	7,426
University of Texas at Austin	1,021	4,141	1,189	4,429	1,372	5,512	1,691	5,771	1,815	6,105	2,208	7,968
Texas A & M University	1,126	4,246	1,224	4,464	1,467	5,607	1,526	5,606	1,591	5,881	2,191	7,951
Texas Tech University	1,131	4,191	1,198	4,258	1,490	5,360	1,550	5,630	1,807	6,097	2,030	7,790
University of Virginia	2,966	8,136	3,354	9,564	3,890	10,826	4,350	12,254	4,480	13,052	4,614	14,006
Virginia Tech	3,063	6,951	3,304	8,152	3,538	8,986	3,812	9,680	3,951	10,404	4,087	10,739
West Virginia University	1,777	4,645	1,850	5,018	1,928	5,486	2,026	5,870	2,128	6,370	2,192	6,784
SUG Average	\$1,843	\$5,075	\$1,989	\$5,589	\$2,178	\$6,215	\$2,338	\$6,646	\$2,447	\$6,962	\$2,539	\$7,549
National Average (public univ.'s)	\$2,159		\$2,410		\$2,604		\$2,820		\$2,977		\$3,151	

Source: Tuition and fees from SUG institutions

Source: National averages from the Digest of Education Statistics, 2003, U. S. Department of Education

(Prepared by the Office of Institutional Research and Assessment, The University of Alabama)

Southern Universities Group
Comparison of Annual Tuition and Fees Charged to Undergraduate Students

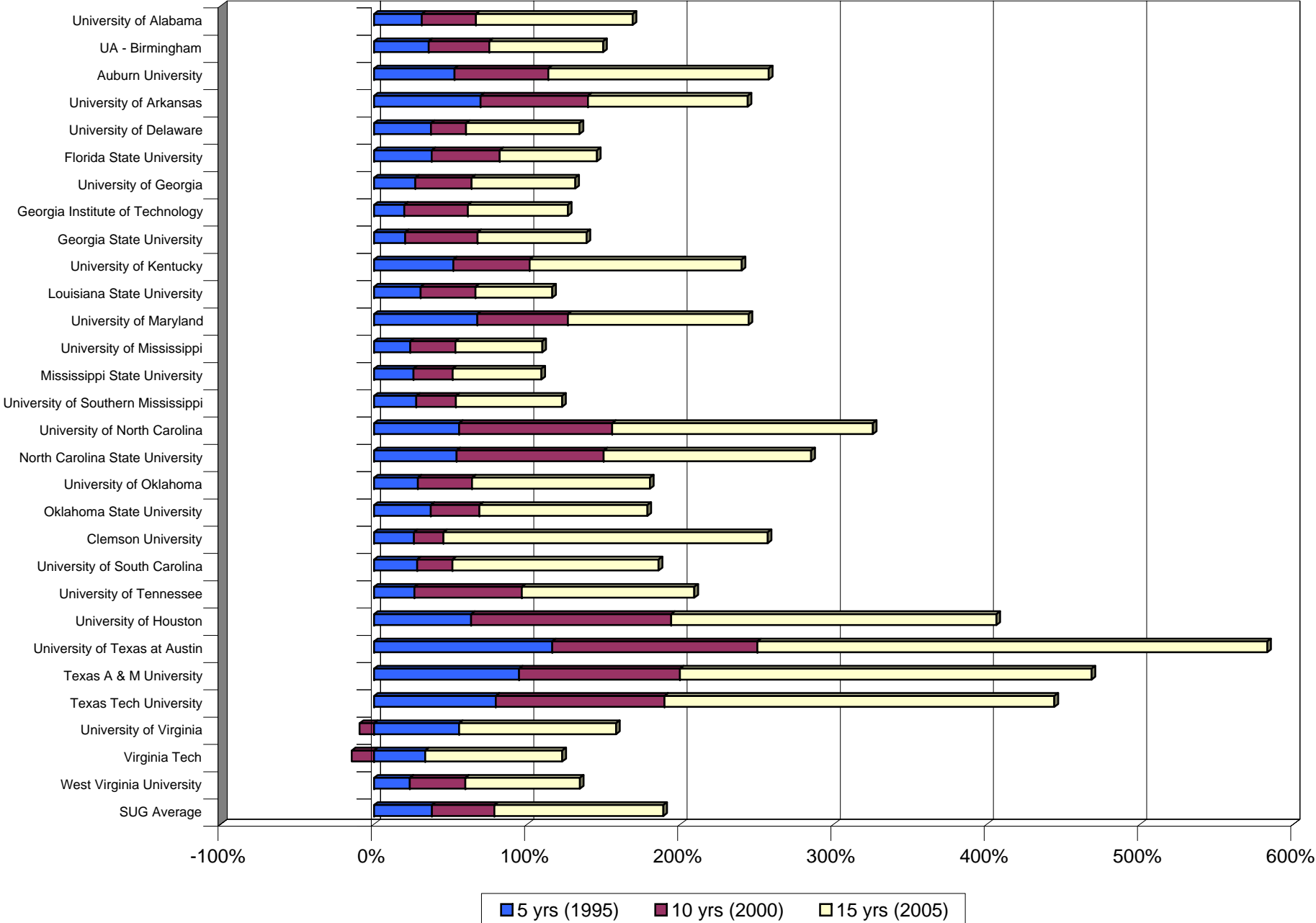
Institution	1996-97		1997-98		1998-99		1999-2000		2000-01		2001-02	
	Resident	Non-Res	Resident	Non-Res	Resident	Non-Res	Resident	Non-Res	Resident	Non-Res	Resident	Non-Res
University of Alabama	\$2,470	\$6,268	\$2,594	\$6,808	\$2,684	\$7,216	\$2,872	\$7,722	\$3,014	\$8,162	\$3,292	\$8,912
UA - Birmingham	2,700	5,100	2,970	5,490	3,060	5,670	3,240	5,970	3,363	6,183	3,640	6,610
Auburn University	2,355	7,065	2,610	7,740	2,820	8,340	2,976	8,766	3,154	9,254	3,380	9,900
University of Arkansas	2,787	6,622	2,887	6,835	3,193	7,993	3,467	8,807	3,828	9,498	4,158	10,113
Arizona State University	2,007	8,377	2,059	8,711	2,159	9,111	2,261	9,413	2,346	9,802	2,488	10,354
University of Delaware	4,430	11,690	4,574	12,204	4,716	12,716	4,858	13,228	5,004	13,754	5,290	14,380
Florida State University	1,882	7,127	1,988	7,904	2,085	8,741	2,196	9,184	2,378	9,716	2,513	10,401
University of Florida	1,793	7,038	1,926	7,483	2,052	8,708	2,141	9,130	2,256	9,594	2,444	10,332
University of Georgia	2,694	7,875	2,838	8,790	2,930	9,860	3,034	10,276	3,276	10,794	3,418	11,314
Georgia Institute of Technology	2,686	8,946	2,901	9,621	2,991	9,921	3,108	10,350	3,308	10,826	3,454	12,350
Georgia State University	2,385	8,640	2,673	9,423	2,778	9,744	2,886	10,222	3,132	10,650	3,292	11,188
University of Kentucky	2,676	7,356	2,736	7,536	3,016	8,376	3,296	9,216	3,446	9,666	3,735	10,275
Louisiana State University	2,687	5,987	2,711	6,311	2,871	6,771	2,881	7,081	3,395	8,695	3,420	8,720
University of Maryland	4,169	10,228	4,460	10,589	4,699	11,221	4,939	11,827	5,136	12,668	5,341	13,413
University of Mississippi	2,631	5,451	2,731	5,551	3,053	6,155	3,053	6,155	3,153	7,106	3,626	8,172
Mississippi State University	2,631	5,451	2,731	5,551	3,017	6,119	3,017	6,119	3,117	7,065	3,586	8,125
University of Southern Mississippi	2,518	5,338	2,591	5,411	2,870	5,972	2,870	5,972	2,970	6,898	3,416	7,932
University of North Carolina	2,161	10,693	2,224	11,210	2,263	11,429	2,365	11,531	2,768	11,934	3,219	12,393
North Carolina State University	2,200	10,732	2,270	11,256	2,364	11,530	2,414	11,580	2,814	11,980	3,228	13,294
University of Oklahoma	2,178	5,868	2,309	6,321	2,313	6,333	2,456	6,791	2,581	6,916	2,713	7,437
Oklahoma State University	2,161	5,851	2,356	6,376	2,356	6,376	2,518	6,853	2,647	6,982	2,794	7,519
Clemson University	3,112	8,316	3,252	8,676	3,344	9,100	3,470	9,456	3,590	9,784	5,090	11,284
University of South Carolina	3,362	8,574	3,434	8,840	3,530	9,242	3,640	9,714	3,868	10,154	4,064	11,004
University of Tennessee	2,220	6,556	2,576	7,258	2,744	7,800	3,104	9,172	3,362	10,166	3,784	11,570
University of Houston	2,135	8,555	2,329	8,749	2,489	8,879	2,830	9,310	2,998	9,448	3,168	9,498
University of Texas at Austin	2,612	9,032	2,866	9,286	3,004	9,394	3,128	9,608	3,575	10,025	3,766	10,096
Texas A & M University	2,361	8,781	2,805	9,225	2,899	9,289	3,167	9,647	3,374	9,824	3,722	10,052
Texas Tech University	2,446	8,866	2,607	9,027	2,801	9,191	2,937	9,417	3,274	9,724	3,488	9,819
University of Virginia	4,648	14,434	4,786	15,030	4,866	15,814	4,305	16,778	4,335	17,584	4,421	18,453
Virginia Tech	4,131	10,783	4,147	11,111	4,305	11,521	3,620	11,844	3,640	12,128	3,664	12,488
West Virginia University	2,262	7,124	2,336	7,356	2,662	7,846	2,748	8,100	2,836	8,362	2,948	8,832
SUG Average	\$2,693	\$8,023	\$2,848	\$8,441	\$2,998	\$8,915	\$3,090	\$9,330	\$3,288	\$9,850	\$3,567	\$10,524
National Average (public univ.'s)	\$3,323		\$3,486		\$3,640		\$3,768		\$3,979		\$4,273	

Southern Universities Group
Comparison of Annual Tuition and Fees Charged to Undergraduate Students

Institution	2002-03		2003-04		2004-05		2005-06		15-yr %increase	
	Resident	Non-Res	Resident	Non-Res	Resident	Non-Res	Resident	Non-Res	Resident	Non-Res
University of Alabama	\$3,556	\$9,624	\$4,134	\$11,294	\$4,630	\$12,664	\$4,864	\$13,516	168.7%	201.3%
UA - Birmingham	3,880	7,810	4,274	9,494	4,662	10,422	4,792	10,732	149.6%	193.2%
Auburn University	3,784	11,084	4,426	12,886	4,828	14,048	5,278	14,878	257.6%	236.0%
University of Arkansas	4,456	10,828	4,768	11,518	5,135	12,425	5,495	13,222	243.9%	234.7%
Arizona State University	2,585	11,105	3,595	12,115	4,064	12,919	4,406	15,095		
University of Delaware	5,760	15,290	6,498	16,028	6,954	16,640	7,318	17,474	134.1%	120.7%
Florida State University	2,684	12,228	2,860	13,888	3,038	15,444	3,208	16,340	145.4%	253.8%
University of Florida	2,581	12,046	2,780	13,808	2,955	15,827	3,094	17,222		
University of Georgia	3,616	12,986	4,078	14,854	4,272	15,588	4,628	16,848	131.3%	217.1%
Georgia Institute of Technology	3,616	13,986	4,076	16,002	4,278	17,558	4,648	18,990	126.5%	213.7%
Georgia State University	3,472	11,842	3,920	13,544	4,154	14,260	4,464	15,378	138.7%	163.0%
University of Kentucky	3,975	10,497	4,547	11,227	5,165	11,945	5,812	12,798	239.9%	171.7%
Louisiana State University	3,536	8,836	3,910	9,210	4,226	11,026	4,419	12,719	116.3%	142.6%
University of Maryland	5,670	14,434	6,759	17,433	7,410	18,710	7,807	20,143	244.4%	218.6%
University of Mississippi	3,916	8,826	3,916	8,826	4,110	9,264	4,320	9,744	109.8%	200.6%
Mississippi State University	3,874	8,780	3,874	8,780	4,106	9,307	4,312	9,772	109.2%	201.3%
University of Southern Mississippi	3,758	8,725	3,874	8,752	4,106	9,276	4,312	9,742	122.7%	212.4%
University of North Carolina	3,856	15,140	4,072	15,920	4,451	17,549	4,613	18,411	325.6%	220.1%
North Carolina State University	3,827	15,111	3,970	15,818	4,282	16,180	4,338	16,536	285.3%	185.4%
University of Oklahoma	2,929	8,077	3,741	10,254	4,140	11,658	4,408	12,301	180.1%	171.5%
Oklahoma State University	3,025	8,079	3,748	10,066	4,071	11,361	4,365	12,389	178.4%	173.8%
Clemson University	5,834	12,892	6,934	14,532	7,840	16,404	8,816	18,440	256.9%	176.9%
University of South Carolina	4,984	13,104	5,778	15,116	6,416	16,784	7,314	18,956	185.7%	196.2%
University of Tennessee	4,056	12,408	4,450	13,532	4,748	14,528	5,290	16,360	209.0%	232.8%
University of Houston	3,348	9,888	4,233	11,313	4,973	12,713	5,163	13,443	406.2%	224.7%
University of Texas at Austin	3,950	10,490	4,188	11,268	6,588	14,772	6,972	16,310	582.9%	293.9%
Texas A & M University	4,748	11,288	5,051	12,131	5,955	13,695	6,399	14,679	468.3%	245.7%
Texas Tech University	3,867	10,407	4,745	11,825	5,848	13,588	6,152	14,432	443.9%	244.4%
University of Virginia	5,165	20,375	6,154	22,174	6,790	22,890	7,370	24,290	148.5%	198.5%
Virginia Tech	4,736	14,352	5,095	15,029	5,838	16,581	6,378	17,837	108.2%	156.6%
West Virginia University	3,240	9,710	3,548	10,768	3,938	12,060	4,164	12,874	134.3%	177.2%
SUG Average	\$3,945	\$11,621	\$4,451	\$12,884	\$4,967	\$14,132	\$5,320	\$15,222	188.7%	199.9%
National Average (public univ.'s)	\$4,698		N/A		N/A		N/A		N/A	

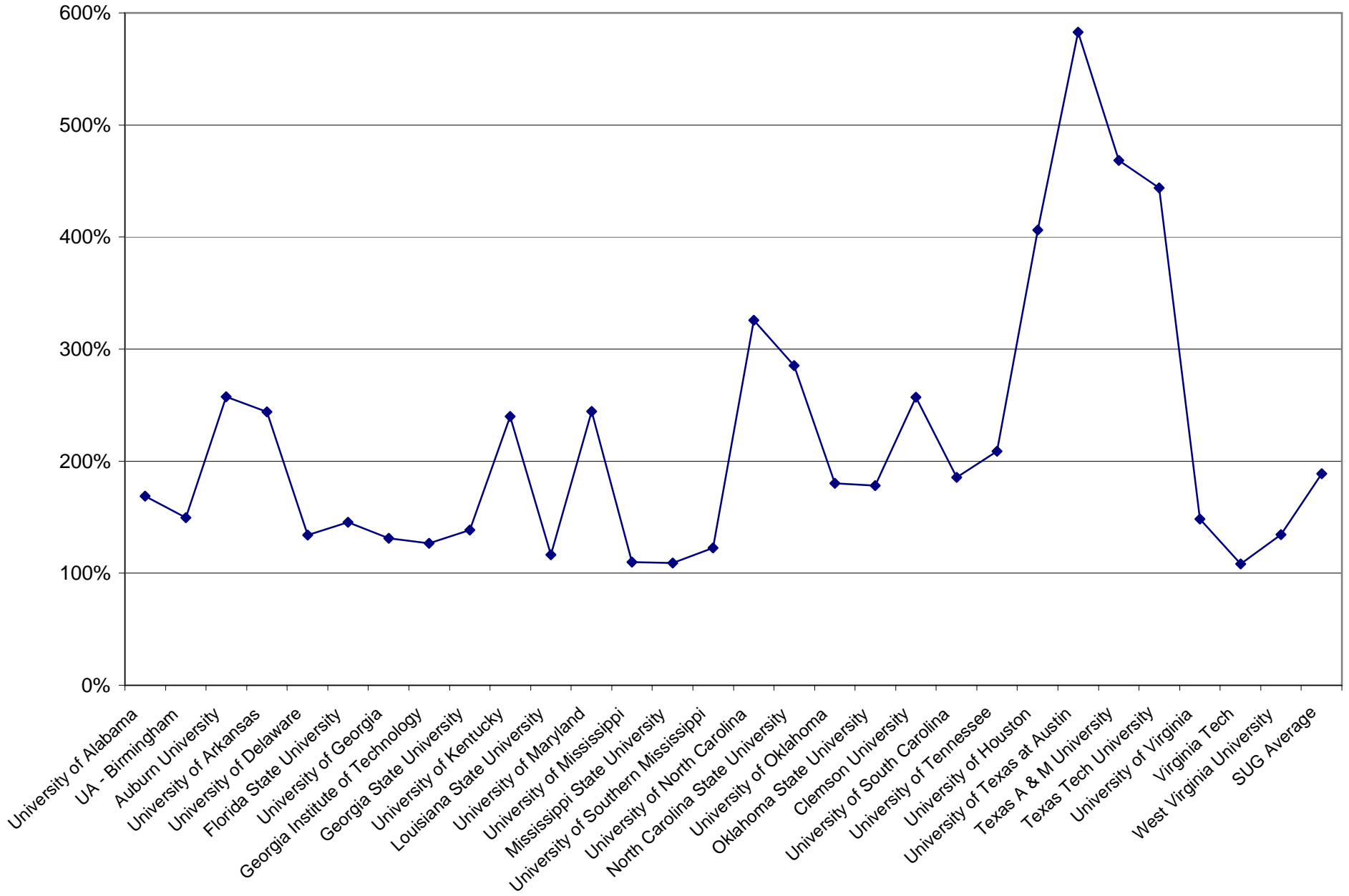
Southern Universities Group

Undergraduate Resident Tuition and Fees
Cumulative Percentage Increase from 1990-91 to 2005-06

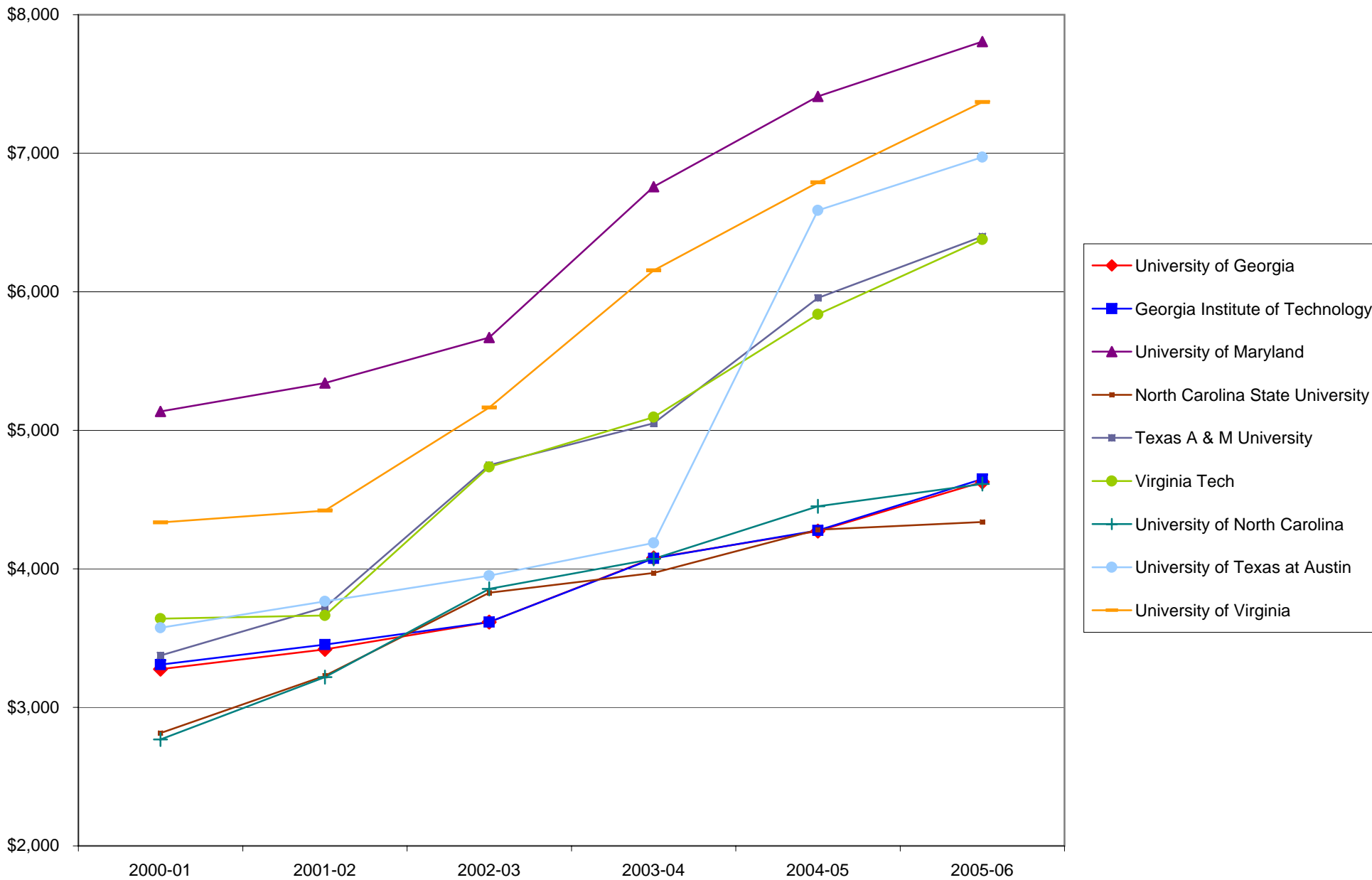


Southern Universities Group

Undergraduate Resident Tuition and Fees Percentage Increase 1990-91 to 2005-06

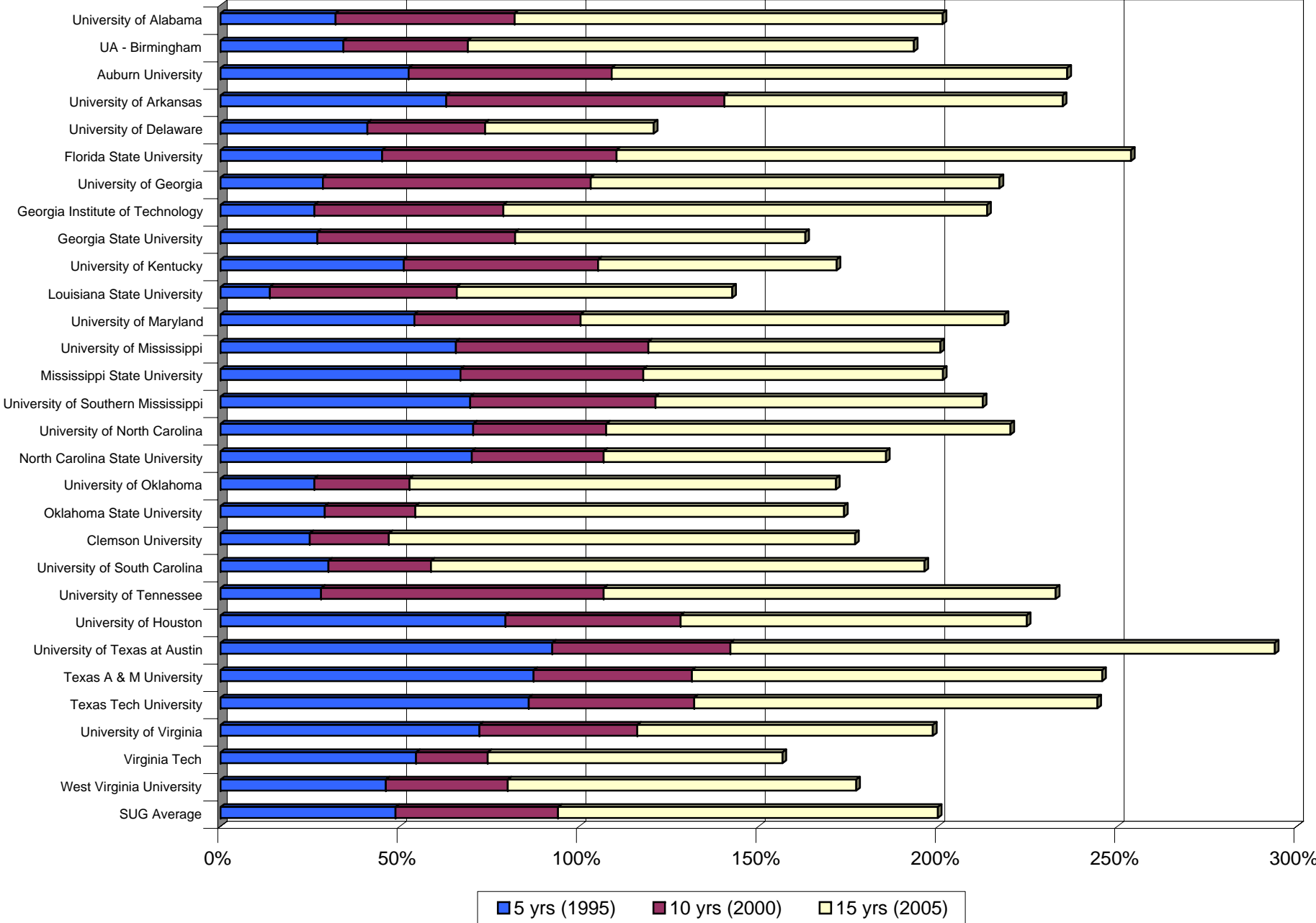


Southern Universities Group
Undergraduate Resident Tuition and Fees
Select Institutions, 2000-01 - 2005-06



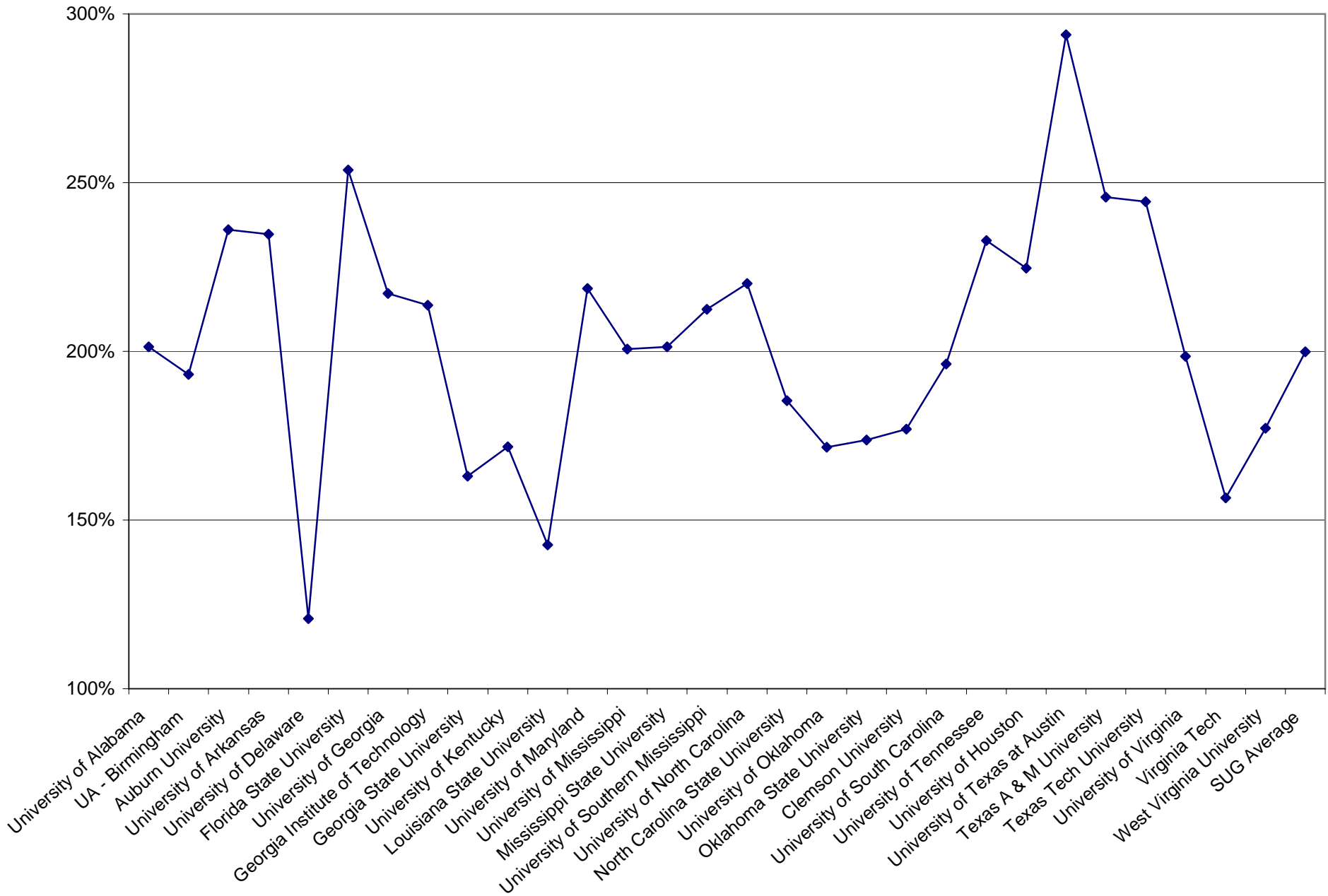
Southern Universities Group

Undergraduate Nonresident Tuition and Fees Cumulative Percentage Increase from 1990-91 to 2005-06



Southern Universities Group

Undergraduate Nonresident Tuition and Fees Percentage Increase 1990-91 to 2005-06



Southern Universities Group
Comparison of Annual Tuition and Fees Charged to Graduate Students

Institution	1990-91		1991-92		1992-93		1993-94		1994-95		1995-96	
	Resident	Non-Res	Resident	Non-Res	Resident	Non-Res	Resident	Non-Res	Resident	Non-Res	Resident	Non-Res
University of Alabama	\$1,810	\$4,486	\$1,972	\$4,908	\$2,068	\$5,166	\$2,172	\$5,424	\$2,260	\$5,642	2,374	5,924
UA - Birmingham	2,070	3,960	1,782	3,366	1,980	3,756	2,100	3,972	2,247	4,239	2,346	4,434
Auburn University	1,476	4,428	1,596	4,788	1,755	5,265	1,950	5,850	2,100	6,300	2,250	6,750
Arizona State University											1,950	7,978
University of Arkansas	2,100	4,450	2,250	5,150	2,446	5,260	2,564	5,511	2,671	5,745	2,823	6,029
University of Delaware	3,032	7,822	3,422	8,592	3,628	9,288	3,854	9,954	4,006	10,536	4,192	11,062
Florida State University	1,831	5,717	2,097	6,954	2,553	8,625	2,670	8,742	2,685	8,757	2,685	8,757
University of Florida											2,610	8,682
University of Georgia	2,001	5,313	2,076	5,520	2,175	5,757	2,250	5,940	2,352	6,150	2,540	6,827
Georgia Institute of Technology	2,052	6,054	2,118	6,279	2,205	6,531	2,277	6,732	2,343	6,933	2,457	7,638
Georgia State University	1,215	3,602	1,258	3,742	1,241	3,824	1,404	4,359	1,448	4,553	1,448	4,553
University of Kentucky	1,870	5,190	2,004	5,564	2,158	5,838	2,478	6,798	2,730	7,530	2,814	7,774
Louisiana State University	2,046	5,246	2,046	5,246	2,176	5,476	2,628	5,928	2,648	5,948	2,672	5,972
University of Maryland	3,337	5,765	3,769	6,481	4,327	7,447	4,966	8,206	5,407	9,127	5,973	9,413
University of Mississippi	2,059	3,241	2,221	3,683	2,435	4,395	2,456	4,916	2,546	5,006	2,546	5,366
Mississippi State University	2,061	3,243	2,223	3,685	2,473	4,433	2,473	4,933	2,561	5,021	2,591	5,411
University of Southern Mississippi	1,936	3,118	2,108	3,570	2,392	4,352	2,392	4,852	2,428	4,888	2,468	5,288
University of North Carolina	1,078	5,746	1,243	7,111	1,279	7,863	1,446	8,488	1,560	9,086	1,677	9,793
North Carolina State University	1,138	5,805	1,260	7,128	1,324	7,908	1,427	8,469	1,590	9,116	1,738	9,854
University of Oklahoma	1,655	4,749	1,818	5,136	1,836	5,154	1,977	5,561	1,994	5,577	2,106	5,946
Oklahoma State University	1,576	4,548	1,839	5,157	1,847	5,165	1,972	5,555	1,980	5,564	2,212	6,052
Clemson University	2,470	2,470	2,630	2,630	2,762	2,762	2,954	5,718	3,036	5,882	3,112	6,034
University of South Carolina	2,674	2,674	2,808	5,616	2,998	5,996	3,230	6,524	3,340	6,746	3,508	7,084
University of Tennessee	2,078	5,282	2,172	5,538	2,308	5,908	2,412	6,192	2,500	6,434	2,626	6,756
University of Houston	1,200	3,696	1,232	3,728	1,782	4,518	1,926	4,566	2,034	4,794	2,038	6,022
University of Texas at Austin	877	3,373	1,021	3,613	1,456	4,720	2,051	5,171	2,211	5,691	2,566	7,174
Texas A & M University	872	3,368	1,032	3,624	1,371	4,899	1,681	5,329	1,813	5,461	2,557	7,165
Texas Tech University	1,023	3,471	1,078	3,526	1,346	4,658	1,586	4,898	1,803	5,235	2,126	6,734
University of Virginia	2,966	8,136	3,354	9,564	3,890	10,826	4,350	12,254	4,480	13,052	4,614	14,006
Virginia Tech	3,525	4,605	3,778	5,254	4,084	5,794	4,400	6,254	4,557	6,726	4,709	6,941
West Virginia University	1,871	4,865	1,946	5,256	2,034	5,754	2,136	6,156	2,244	6,682	2,336	7,014
SUG Average	\$1,928	\$4,635	\$2,074	\$5,187	\$2,287	\$5,770	\$2,489	\$6,319	\$2,606	\$6,635	\$2,731	\$7,240
National Average (Public u's)	\$2,206		\$2,524		\$2,791		\$3,050		\$3,250		\$3,449	

Source: Tuition and fees from SUG institutions

Source: National averages from the Digest of Education Statistics, 2003, U. S. Department of Education

(Prepared by the Office of Institutional Research and Assessment, The University of Alabama)

Southern Universities Group
Comparison of Annual Tuition and Fees Charged to Graduate Students

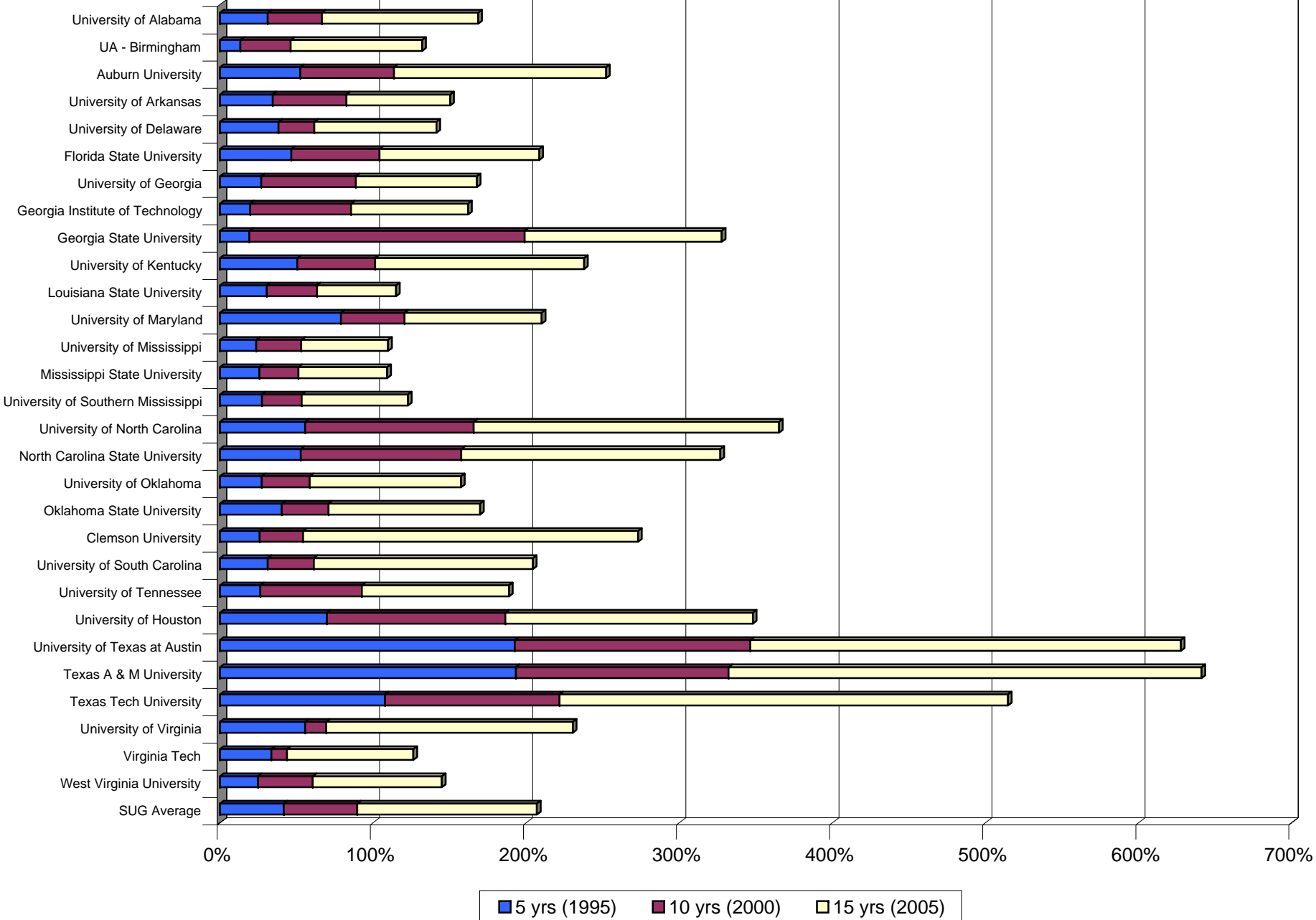
Institution	1996-97		1997-98		1998-99		1999-2000		2000-01		2001-02	
	Resident	Non-Res	Resident	Non-Res	Resident	Non-Res	Resident	Non-Res	Resident	Non-Res	Resident	Non-Res
University of Alabama	2,470	6,268	2,594	6,808	2,684	7,216	2,872	7,722	3,014	8,162	3,292	8,912
UA - Birmingham	2,448	4,632	2,688	4,992	2,760	5,136	2,928	5,424	3,027	5,595	3,250	5,938
Auburn University	2,355	7,065	2,610	7,740	2,820	8,340	2,976	8,766	3,154	9,254	3,380	9,900
Arizona State University	2,009	8,377	2,059	8,711	2,159	9,111	2,261	9,413	2,346	9,802	2,488	10,354
University of Arkansas	2,922	6,224	3,016	6,419	3,242	7,238	3,522	7,896	3,834	8,460	4,055	8,914
University of Delaware	4,336	11,596	4,490	12,120	4,626	12,626	4,762	13,132	4,902	13,652	5,184	14,274
Florida State University	2,839	9,337	3,145	10,475	3,332	11,578	3,504	12,162	3,738	12,828	3,983	13,756
University of Florida	2,768	9,266	3,096	10,426	3,306	11,551	3,461	12,118	3,640	12,730	3,928	13,700
University of Georgia	2,799	8,238	3,069	9,630	3,290	11,300	3,516	12,204	3,776	12,794	3,942	13,410
Georgia Institute of Technology	2,686	8,946	3,132	10,548	3,351	11,361	3,590	12,278	3,808	12,826	3,978	13,446
Georgia State University	1,598	5,540	1,908	6,363	3,129	11,148	3,368	12,150	3,632	12,650	3,816	13,284
University of Kentucky	2,916	8,076	2,976	8,256	3,276	9,156	3,596	10,116	3,766	10,626	4,075	11,295
Louisiana State University	2,696	5,996	2,720	6,320	2,820	6,720	2,830	7,030	3,344	8,644	3,399	8,699
University of Maryland	6,453	9,453	7,015	10,087	7,092	10,164	7,160	10,592	7,359	11,007	7,650	11,466
University of Mississippi	2,631	5,451	2,731	5,551	3,053	6,155	3,053	6,155	3,153	7,106	3,626	8,172
Mississippi State University	2,631	5,451	2,731	5,551	3,017	6,119	3,017	6,119	3,117	7,065	3,586	8,125
University of Southern Mississippi	2,518	5,338	2,591	5,411	2,870	5,972	2,870	5,972	2,970	6,898	3,416	7,932
University of North Carolina	2,151	10,683	2,215	11,201	2,253	11,419	2,405	11,571	2,865	12,031	3,351	12,517
North Carolina State University	2,206	10,738	2,276	11,262	2,370	11,536	2,470	11,636	2,931	12,097	3,496	13,807
University of Oklahoma	2,232	6,072	2,383	6,562	2,388	6,576	2,532	7,056	2,624	7,148	2,768	7,699
Oklahoma State University	2,224	6,064	2,408	6,596	2,408	6,596	2,588	7,112	2,694	7,218	2,850	7,781
Clemson University	3,112	6,034	3,252	6,334	3,344	6,642	3,680	9,456	3,810	9,784	5,310	11,284
University of South Carolina	3,630	7,368	3,724	7,634	3,894	8,114	4,014	8,528	4,314	9,182	4,532	9,954
University of Tennessee	2,744	7,080	3,142	7,824	3,354	8,410	3,806	9,874	4,004	10,596	4,280	12,066
University of Houston	2,365	6,925	2,569	7,081	2,729	7,169	3,154	8,002	3,436	8,596	3,624	8,688
University of Texas at Austin	2,940	8,076	3,194	8,330	3,356	8,468	3,504	8,688	3,915	9,075	4,097	9,161
Texas A & M University	2,745	7,881	3,153	8,289	3,223	8,335	3,551	8,735	3,769	8,929	4,119	9,183
Texas Tech University	2,536	7,672	2,667	7,803	2,825	7,937	2,985	8,169	3,292	8,452	3,471	8,535
University of Virginia	4,648	14,434	4,786	15,030	4,866	15,814	4,916	16,603	5,023	17,409	5,178	18,268
Virginia Tech	4,753	6,985	4,769	7,199	4,927	7,537	4,950	7,758	5,069	7,949	5,219	8,189
West Virginia University	2,412	7,366	2,490	7,606	2,820	8,104	2,910	8,368	3,004	8,640	3,242	9,110
SUG Average	\$2,896	\$7,698	\$3,084	\$8,199	\$3,277	\$8,824	\$3,444	\$9,381	\$3,656	\$9,910	\$3,954	\$10,575
National Average (Public u's)	\$3,607		\$3,744		\$3,897		\$4,043		\$4,243		\$4,496	

Southern Universities Group
Comparison of Annual Tuition and Fees Charged to Graduate Students

Institution	2002-03		2003-04		2004-05		2005-06		15-yr %increase	
	Resident	Non-Res	Resident	Non-Res	Resident	Non-Res	Resident	Non-Res	Resident	Non-Res
University of Alabama	3,556	9,624	4,134	11,294	4,630	12,664	4,864	13,516	168.7%	201.3%
UA - Birmingham	3,562	7,258	4,046	9,134	4,602	10,434	4,804	10,924	132.1%	175.9%
Auburn University	3,784	11,084	4,426	12,886	4,828	14,048	5,198	14,798	252.2%	234.2%
Arizona State University	2,585	11,105	3,795	12,315	5,129	13,649	5,561	14,743		
University of Arkansas	4,333	9,532	4,609	10,117	4,963	10,912	5,257	11,562	150.3%	159.8%
University of Delaware	5,520	15,050	6,374	15,904	6,826	16,512	7,318	17,474	141.4%	123.4%
Florida State University	4,396	16,220	4,828	17,657	5,368	19,800	5,651	20,804	208.6%	263.9%
University of Florida	4,304	16,030	4,926	18,589	5,484	21,359	6,234	21,359		
University of Georgia	4,174	15,218	4,720	17,420	4,948	18,282	5,358	19,758	167.8%	271.9%
Georgia Institute of Technology	4,174	14,218	4,718	16,269	4,954	17,850	5,378	19,306	162.1%	218.9%
Georgia State University	4,030	14,074	4,562	16,112	4,830	16,956	5,197	18,290	327.7%	407.8%
University of Kentucky	4,347	11,565	4,975	12,315	5,653	13,093	6,318	13,968	237.9%	169.1%
Louisiana State University	3,515	8,815	3,889	9,189	4,205	11,005	4,398	12,698	115.0%	142.1%
University of Maryland	8,054	12,302	9,135	15,207	9,781	17,701	10,349	20,597	210.1%	257.3%
University of Mississippi	3,916	8,826	3,916	8,826	4,110	9,264	4,320	9,738	109.8%	200.5%
Mississippi State University	3,874	8,780	3,874	8,780	4,106	9,307	4,312	9,772	109.2%	201.3%
University of Southern Mississippi	3,758	8,725	3,874	8,752	4,106	9,276	4,312	9,742	122.7%	212.4%
University of North Carolina	4,043	15,692	4,269	16,267	4,651	17,899	5,014	19,012	365.1%	230.9%
North Carolina State University	4,036	15,685	4,189	16,187	4,501	16,549	4,857	16,905	326.8%	191.2%
University of Oklahoma	2,981	8,355	3,727	10,524	4,022	11,431	4,260	12,039	157.4%	153.5%
Oklahoma State University	3,087	8,362	3,752	10,346	3,965	11,525	4,253	12,569	169.9%	176.4%
Clemson University	6,084	12,932	7,232	14,532	7,840	16,404	9,216	18,440	273.1%	646.6%
University of South Carolina	5,560	11,848	6,440	13,671	7,150	15,180	8,138	17,876	204.3%	568.5%
University of Tennessee	4,590	12,942	5,032	14,114	5,376	15,156	6,000	17,070	188.7%	223.2%
University of Houston	3,816	9,048	4,542	10,206	5,174	11,366	5,376	12,000	348.0%	224.7%
University of Texas at Austin	4,295	9,527	4,554	10,218	6,085	13,237	6,381	14,271	627.6%	323.1%
Texas A & M University	4,989	10,221	5,281	10,945	6,058	12,250	6,462	13,086	641.1%	288.5%
Texas Tech University	3,843	9,075	5,057	10,721	5,992	12,184	6,288	12,912	514.7%	272.0%
University of Virginia	6,046	19,136	7,856	19,964	9,200	20,200	9,800	20,400	230.4%	150.7%
Virginia Tech	6,431	9,666	6,944	10,663	7,512	11,682	7,977	12,835	126.3%	178.7%
West Virginia University	3,564	10,016	3,904	11,108	4,332	12,442	4,582	13,282	144.9%	173.0%
SUG Average	\$4,363	\$11,643	\$4,954	\$12,911	\$5,496	\$14,181	\$5,917	\$15,218	207.0%	228.3%
National Average (Public u's)	\$4,855		N/A		N/A		N/A		N/A	

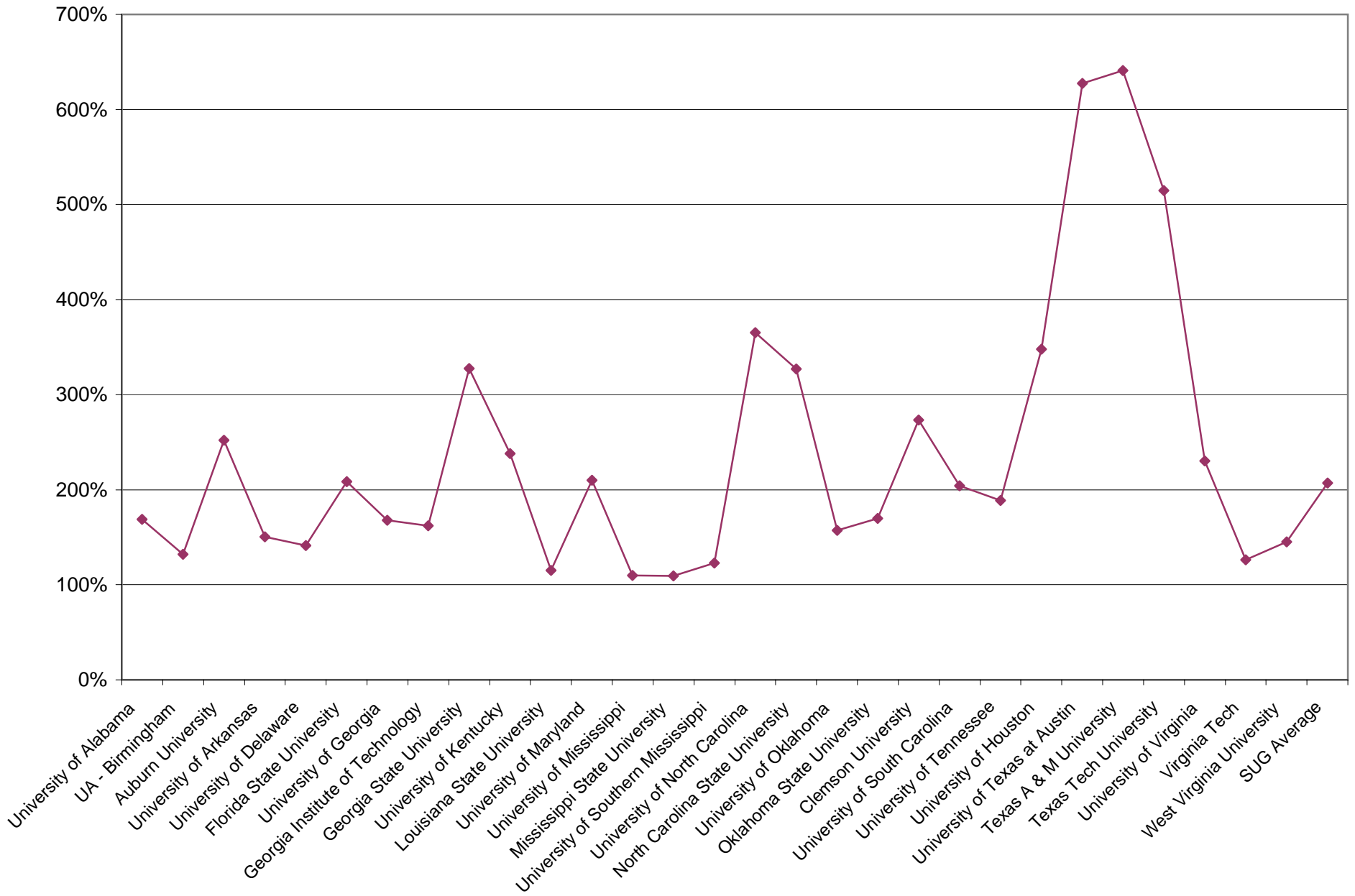
Southern Universities Group

Graduate Resident Tuition and Fees
Cumulative Percentage Increase from 1990-91 to 2005-06



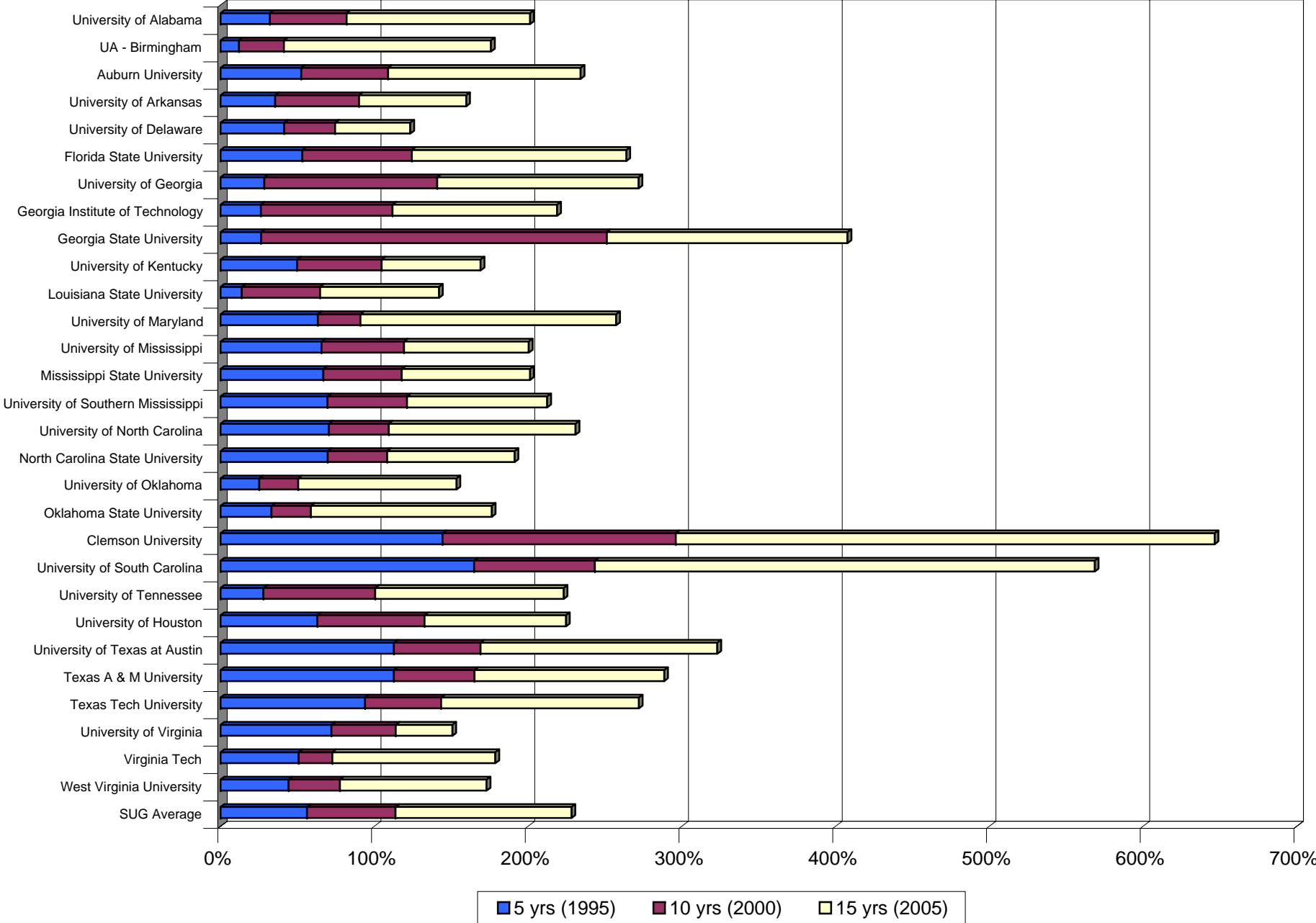
Southern Universities Group

Graduate Resident Tuition and Fees Percentage Increase 1990-91 to 2005-06



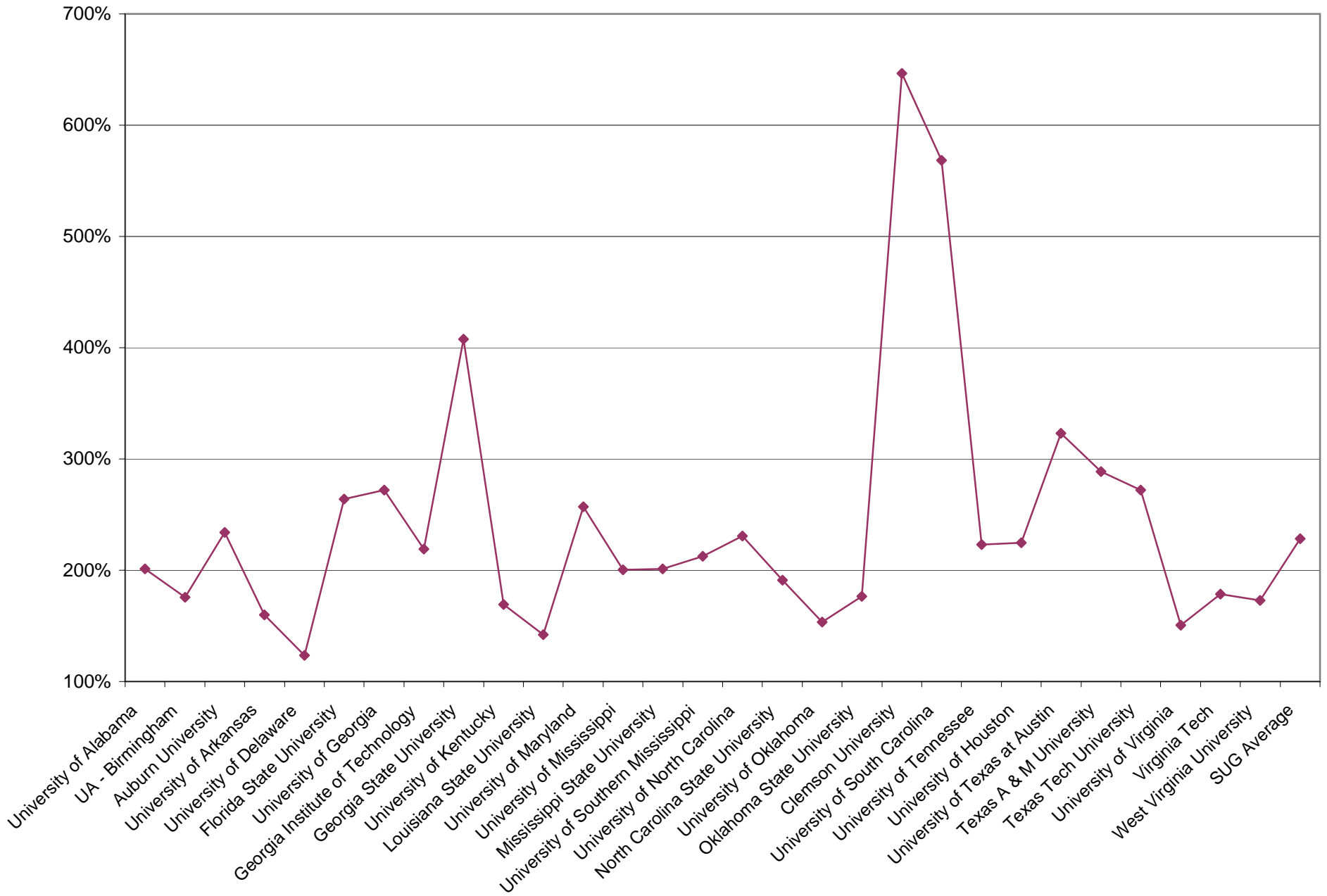
Southern Universities Group

Graduate Nonresident Tuition and Fees
Cumulative Percentage Increase from 1990-91 to 2005-06



Southern Universities Group

Graduate Nonresident Tuition and Fees Percentage Increase 1990-91 to 2005-06



**Southern Universities Group
Comparison of Annual Tuition and Fees Charged to Law Students**

Institution	1990-91		1991-92		1992-93		1993-94		1994-95		1995-96	
	Resident	Non-Res	Resident	Non-Res	Resident	Non-Res	Resident	Non-Res	Resident	Non-Res	Resident	Non-Res
University of Alabama	\$2,472	\$5,148	\$2,680	\$5,616	\$2,798	\$5,896	\$2,938	\$6,190	\$3,198	\$6,776	\$3,440	\$7,286
University of Arkansas	2,100	4,450	2,460	5,280	2,702	5,678	2,877	6,021	3,021	6,309	3,376	7,288
Arizona State University											3,884	9,912
Florida State University	2,034	6,083	2,331	7,391	2,845	9,171	2,971	9,297	2,986	9,311	2,986	9,311
University of Florida											2,911	9,237
University of Georgia	2,385	6,465	2,476	6,720	2,590	7,004	2,677	7,221	2,793	7,473	2,990	8,271
Georgia State University	1,806	5,070	1,878	5,286	1,945	5,490	1,998	5,646	2,118	5,862	2,132	6,356
University of Kentucky	2,590	7,490	2,884	7,924	3,078	8,408	3,598	9,738	4,180	10,900	4,594	11,944
Louisiana State University	3,534	7,734	3,534	7,734	3,669	8,089	3,912	8,532	3,936	8,556	3,936	8,556
University of Maryland (Baltimore)	5,397	9,457	6,195	10,661	6,851	11,897	7,713	13,456	8,060	14,505	8,416	15,151
University of Mississippi	2,359	3,541	2,571	4,033	2,785	4,745	2,806	6,068	2,896	6,458	2,896	6,818
University of North Carolina	1,150	7,013	1,314	8,676	1,350	9,600	1,512	10,328	2,126	11,542	2,243	12,397
University of Oklahoma	2,450	7,430	2,665	7,915	2,683	7,933	3,167	9,204	3,184	9,221	3,611	10,553
University of South Carolina	3,590	7,600	3,900	8,290	4,450	9,450	4,970	10,546	5,588	11,356	6,168	12,224
University of Tennessee	2,342	5,606	2,452	5,880	2,606	6,448	2,912	7,246	3,292	8,286	3,564	8,958
University of Texas at Austin	3,177	5,697	3,289	5,809	3,992	7,352	4,235	8,155	4,299	9,339	5,018	11,038
Texas Tech University	3,291	5,991	3,430	6,130	4,370	7,070	4,510	7,070	4,567	7,267	5,180	8,930
University of Houston	3,180	5,880	3,560	6,260	3,690	6,390	4,350	7,050	4,362	7,062	4,816	8,566
University of Virginia	4,442	10,082	4,830	11,510	6,170	13,444	7,570	15,678	8,206	17,426	10,290	18,694
West Virginia University	2,771	6,365	3,096	7,256	3,384	8,354	3,786	9,346	3,994	10,254	4,122	10,634
SUG Average	\$2,837	\$6,506	\$3,086	\$7,132	\$3,442	\$7,912	\$3,806	\$8,711	\$4,045	\$9,328	\$4,329	\$10,106
National Average (public u's)	\$3,430		\$3,933		\$4,261		\$4,835		\$5,307		\$5,821	

Source: Tuition and fees from SUG institutions

Source: National averages from the Digest of Education Statistics, 2003, U. S. Department of Education

(Prepared by the Office of Institutional Research and Assessment, The University of Alabama)

**Southern Universities Group
Comparison of Annual Tuition and Fees Charged to Law Students**

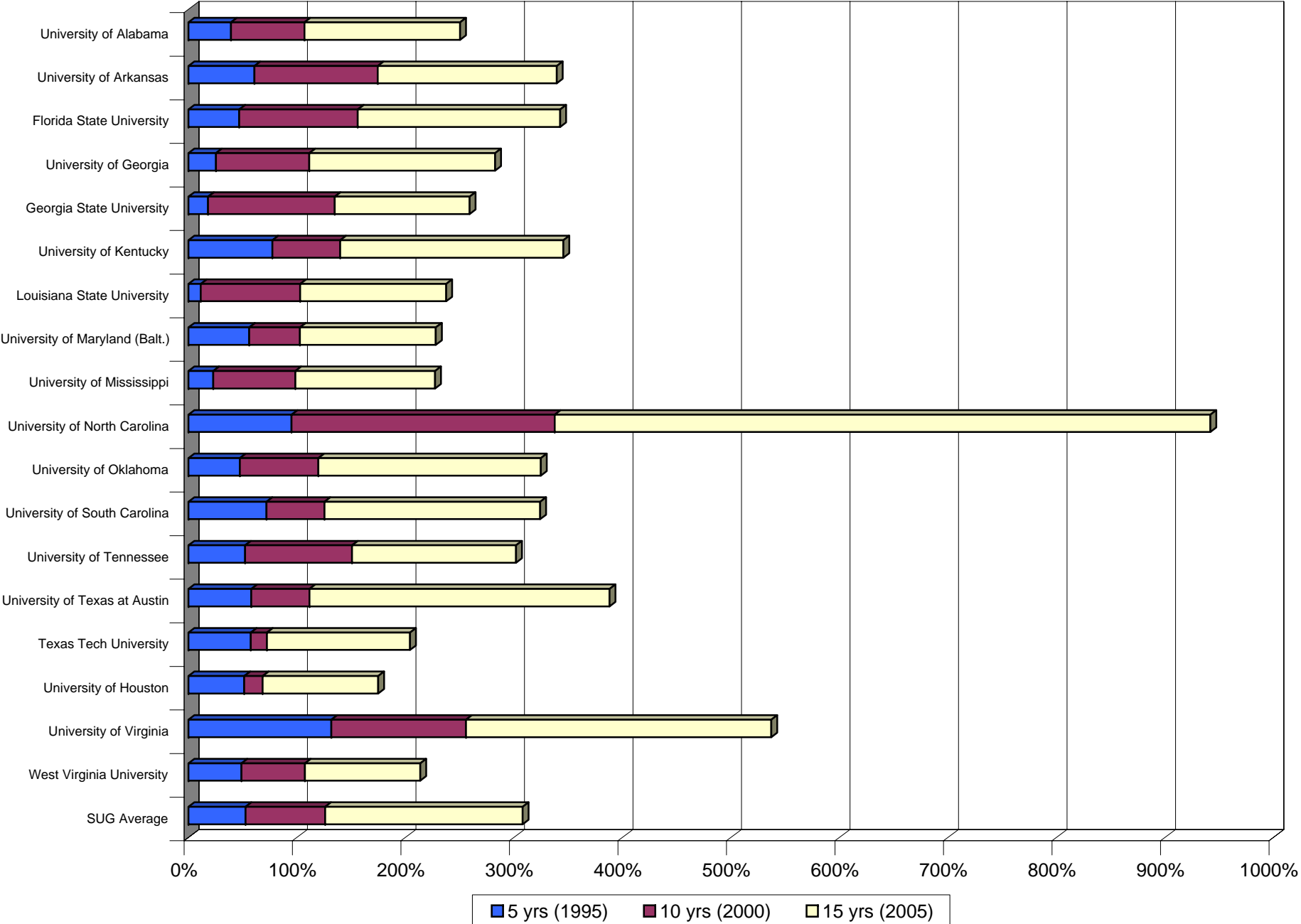
Institution	1996-97		1997-98		1998-99		1999-2000		2000-01		2001-02	
	Resident	Non-Res	Resident	Non-Res	Resident	Non-Res	Resident	Non-Res	Resident	Non-Res	Resident	Non-Res
University of Alabama	\$3,578	\$7,712	\$3,758	\$8,382	\$4,490	\$9,484	\$4,812	\$10,156	\$5,112	\$10,798	\$5,764	\$11,972
University of Arkansas	3,496	7,528	3,614	7,790	4,178	9,146	5,298	10,746	5,762	11,546	6,591	13,169
Arizona State University	3,940	10,308	3,988	10,640	4,464	11,416	4,938	12,090	5,096	12,552	5,236	13,102
Florida State University	3,161	9,929	3,509	11,143	3,721	12,310	4,891	16,163	5,208	17,044	5,555	18,278
University of Florida	3,863	12,323	4,325	13,867	4,619	15,354	4,836	16,109	5,086	16,922	5,486	18,209
University of Georgia	3,315	10,017	3,757	12,357	4,200	14,940	4,736	17,084	5,042	17,858	5,272	18,730
Georgia State University	3,176	10,084	3,390	11,233	3,662	13,078	3,864	14,134	4,240	14,800	4,470	15,558
University of Kentucky	4,776	12,376	4,956	12,796	5,426	14,036	5,896	15,266	6,212	15,786	6,715	16,529
Louisiana State University	3,936	8,556	3,936	8,923	4,106	9,581	6,164	12,005	7,174	13,015	7,192	13,033
University of Maryland (Baltimore)	8,815	15,881	9,219	16,603	9,842	17,735	10,358	18,630	10,937	19,623	11,246	20,193
University of Mississippi	2,981	6,903	3,081	7,003	3,581	7,503	4,081	8,003	4,681	9,454	5,384	10,872
University of North Carolina	2,717	13,989	2,881	14,743	3,170	15,270	3,572	15,672	5,031	17,131	7,297	17,697
University of Oklahoma	4,168	11,806	4,618	13,371	4,633	13,417	4,965	13,493	5,381	13,595	5,922	14,947
University of South Carolina	6,476	12,836	6,864	13,606	7,208	14,966	7,548	15,616	8,090	16,630	8,920	18,350
University of Tennessee	3,794	9,620	4,205	10,497	4,502	11,424	5,126	13,432	5,870	15,672	6,668	18,380
University of Texas at Austin	5,340	11,360	5,942	12,942	6,296	13,604	6,356	13,804	6,719	15,175	6,834	15,234
Texas Tech University	5,986	9,736	4,947	7,947	5,297	9,353	5,361	9,417	5,670	9,676	5,751	9,807
University of Houston	4,621	8,221	4,729	8,329	5,033	8,873	5,266	9,586	5,356	9,676	7,368	9,768
University of Virginia	12,030	19,178	13,954	19,870	14,606	20,706	15,319	21,718	15,803	23,684	18,090	25,316
West Virginia University	4,288	11,168	5,062	12,104	5,476	12,748	5,652	13,162	5,746	13,434	6,132	14,210
SUG Average	\$4,723	\$10,977	\$5,037	\$11,707	\$5,426	\$12,747	\$5,952	\$13,814	\$6,411	\$14,704	\$7,095	\$15,668
National Average (public u's)	\$6,565		\$7,004		\$7,425		\$7,740		\$8,326		\$9,043	

**Southern Universities Group
Comparison of Annual Tuition and Fees Charged to Law Students**

Institution	2002-03		2003-04		2004-05		2005-06		15-yr %increase	
	Resident	Non-Res	Resident	Non-Res	Resident	Non-Res	Resident	Non-Res	Resident	Non-Res
University of Alabama	\$6,144	\$12,850	\$7,252	\$14,982	\$8,130	\$16,802	\$8,660	\$18,028	250.3%	250.2%
University of Arkansas	7,084	14,168	8,011	16,021	8,694	17,454	9,229	18,514	339.5%	316.0%
Arizona State University	5,587	14,203	9,545	18,065	12,379	20,899	12,812	23,076		
Florida State University	6,130	21,525	6,741	24,530	7,505	27,517	9,001	27,580	342.5%	353.4%
University of Florida	6,014	21,282	6,891	24,680	7,680	28,365	9,000	28,364		
University of Georgia	5,832	20,850	7,130	23,898	7,978	25,084	9,126	27,102	282.6%	319.2%
Georgia State University	4,714	16,468	5,382	18,850	6,112	20,306	6,484	21,644	259.0%	326.9%
University of Kentucky	7,075	16,575	8,771	18,271	10,269	19,869	11,536	21,462	345.4%	186.5%
Louisiana State University	8,568	15,494	9,682	17,693	11,554	20,650	11,926	21,022	237.5%	171.8%
University of Maryland (Baltimore)	12,746	23,490	15,225	26,504	16,253	27,532	17,701	28,980	228.0%	206.4%
University of Mississippi	6,215	12,142	6,615	12,452	7,210	13,380	7,720	14,360	227.3%	305.5%
University of North Carolina	9,966	21,822	10,429	22,397	11,119	23,037	11,981	24,199	941.8%	245.1%
University of Oklahoma	6,522	16,450	7,771	17,700	9,130	19,059	10,405	20,333	324.7%	173.7%
University of South Carolina	11,320	22,176	13,064	26,169	14,378	28,794	15,224	30,360	324.1%	299.5%
University of Tennessee	7,156	19,212	7,830	19,886	8,396	21,384	9,412	24,106	301.9%	330.0%
University of Texas at Austin	9,191	16,807	9,358	18,934	12,523	23,731	15,507	27,863	388.1%	389.1%
Texas Tech University	7,947	12,315	8,609	12,977	9,448	14,872	10,008	15,912	204.1%	165.6%
University of Houston	7,464	9,864	8,094	12,942	8,630	14,054	8,736	14,640	174.7%	149.0%
University of Virginia	21,012	27,352	23,798	29,201	26,100	31,100	28,300	33,300	537.1%	230.3%
West Virginia University	6,742	15,624	7,404	17,326	8,216	19,342	8,690	20,406	213.6%	220.6%
SUG Average	\$8,171	\$17,533	\$9,380	\$19,674	\$10,585	\$21,662	\$11,573	\$23,063	307.9%	254.5%
National Average (public u's)	N/A		N/A		N/A		N/A			

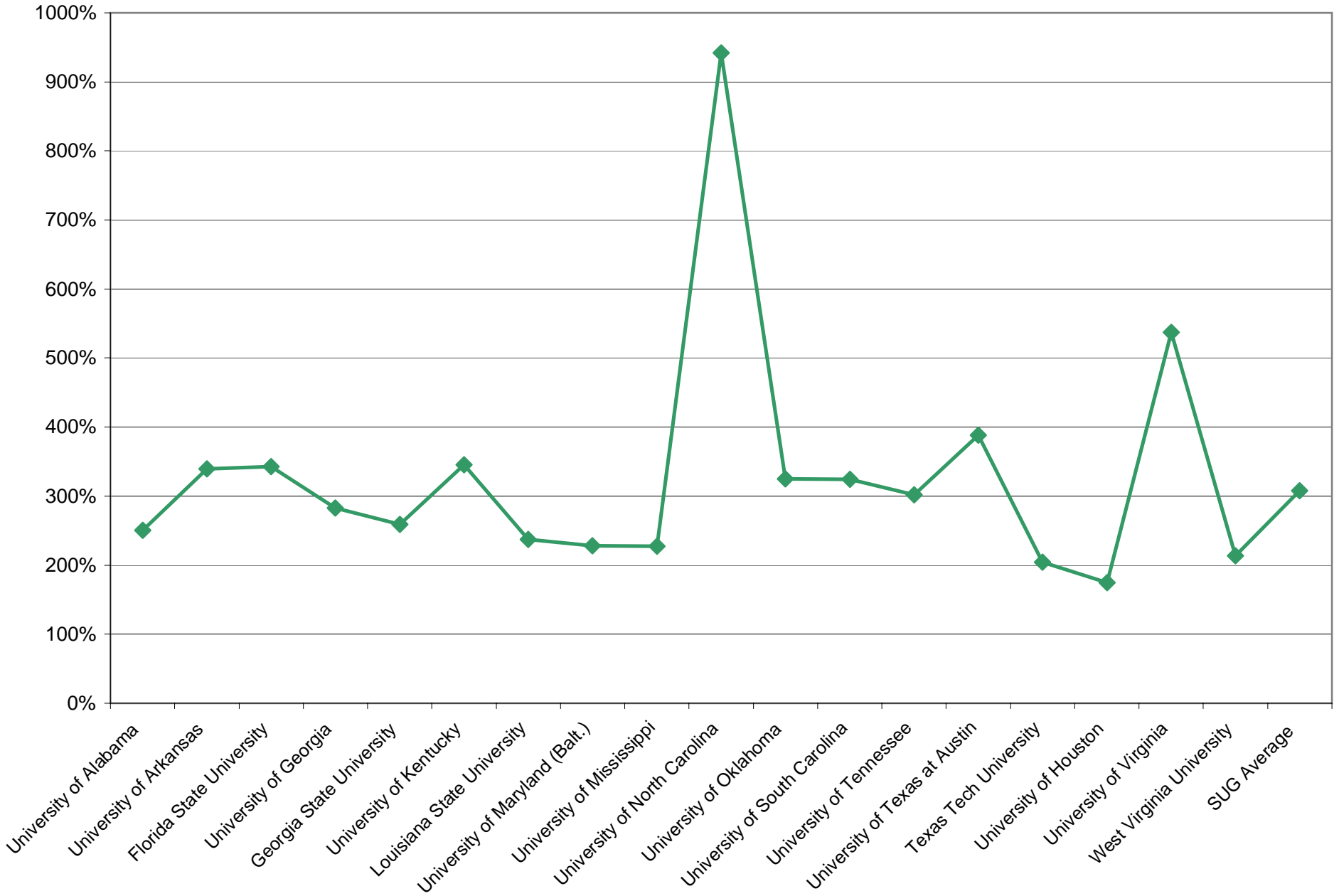
Southern Universities Group

Law Resident Tuition and Fees
 Cumulative Percentage Increase from 1990-91 to 2005-06



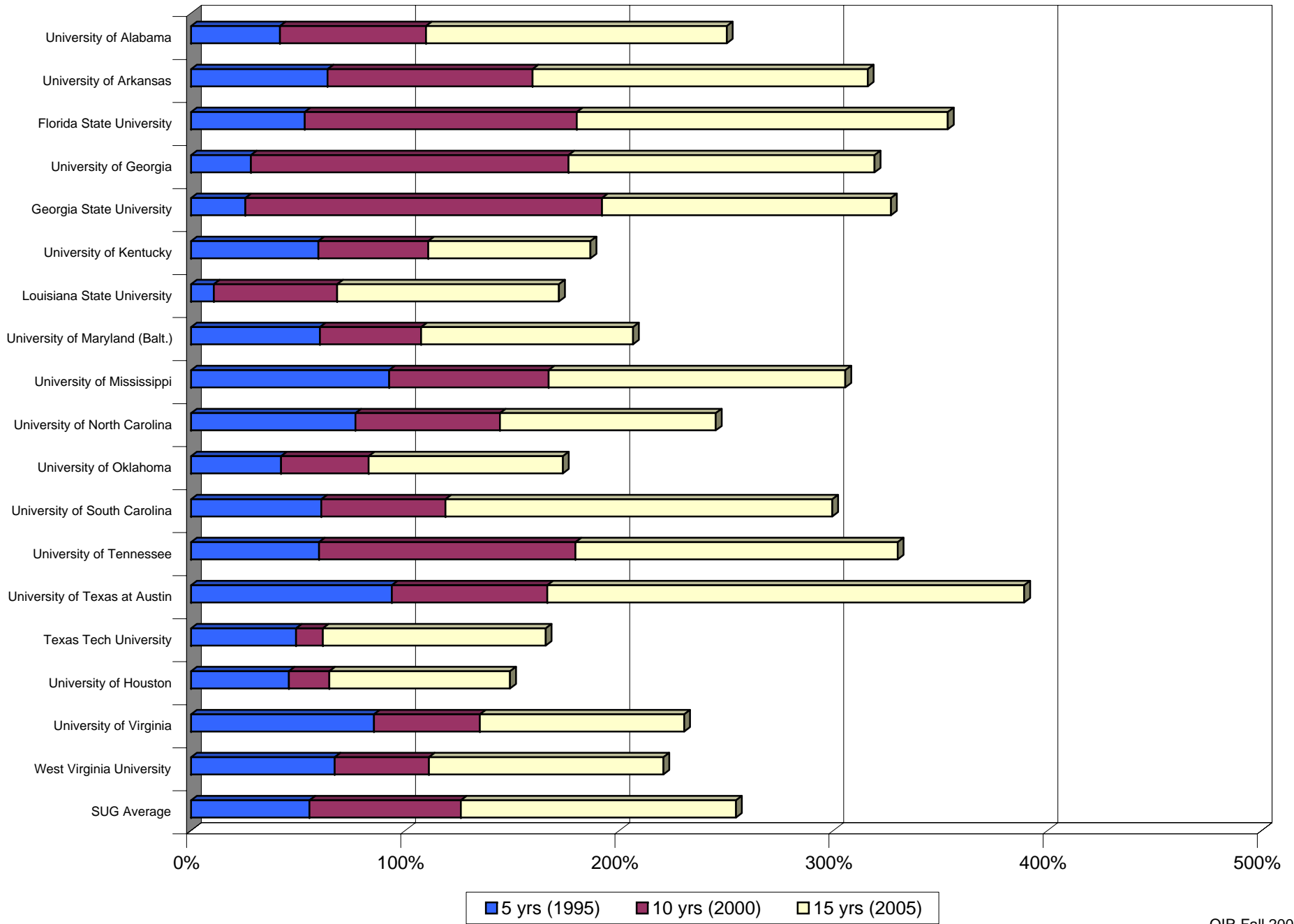
Southern Universities Group

Law Resident Tuition and Fees Percentage Increase 1990-91 to 2005-06



Southern Universities Group

Law Nonresident Tuition and Fees Cumulative Percentage Increase from 1990-91 to 2005-06



Southern Universities Group

Law Nonresident Tuition and Fees Percentage Increase 1990-91 to 2005-06

